



UPGRADE VINYL

OPERABLE WALLS & ACCORDION PARTITIONS



Transforming Space Into
POSSIBILITIES

White Creek



Ash, KCW-1



Jacobean , KCW-2



Mocha , KCW-3



Prairie , KCW-4



Rustic , KCW-5



Sedona , KCW-6



Slate, KCW-7



Vintage, KCW-8



Willow, KCW-9

Lineage



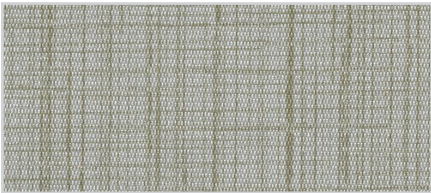
Origin, KCU-1



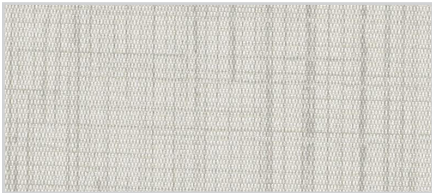
Heir, KCU-2



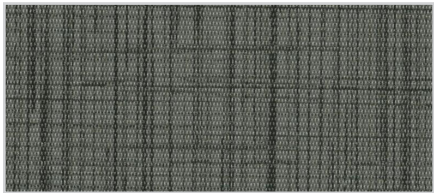
Heritage, KCU-3



Generation, KCU-4



Pedigree, KCU-5



Descent, KCU-6

Destiny



Illusion, KCU-7



Mottled, KCU-8



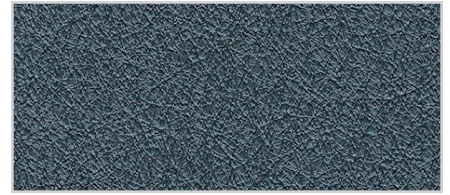
Opalescence, KCU-9



Enchanted, KCU-10



Melded, KCU-11



Fascination, KCU-12

Galerie



Earnest, KCU-13



Baroness, KCU-14



Poplar, KCU-15



Hope, KCU-16



Expectation, KCU-17



Smoke, KCU-18

Koroseal®

3875 Embassy Parkway
Fairlawn, OH 44333
855.753.5474 • koroseal.com

PATTERNS

White Creek • Lineage
Destiny • Galerie

	US UNITS	METRIC UNITS
Total Weight	20.0 oz. PLY 13.3 oz. PSY	620 g PLM 451 g PSM
Roll Width	52" – 54"	132 cm – 137 cm
Backing	Woven	
Tensile (Minimum)	50 x 55 lb _f	222 x 245 N
Tear (Minimum)	25 x 25 lb _f	111 x 111 N
Federal Spec	CCC-W-408D, Type II	
WA Spec.	WA-101, Type II	
ASTM F-793	Category V, Type II	
Fire Testing	NFPA 101® Life Safety Code® NFPA 255 (ASTM E-84, CAN S102M) Tunnel Test ¹ Class A Rating Flame Spread – 10 Smoke Developed – 5 NFPA 286 Corner Burn Test ² Meets requirements for Flame Spread, Smoke Developed and Flashover	
CE Certification	EU Classification in accordance with EN 15102:2007 + A1:2011	
Indoor Air Quality offices	California 01350 – Meets emission requirements for schools and	
Repeat	Vertical	N/A
	Horizontal	N/A
	Nomimal Pattern Width	51"
	Match Information	Reverse Hang, Random Match – all patterns except: Lineage: Random Match, Non-Reverse Hang

1. When applied to GRC board with A-848-B adhesive
2. When applied to 5/8" Type-X-Gypsum board with A-848-B adhesive

Kwik-Wall™ standard and upgrade vinyls are supplied by Koroseal®. Both Kwik-Wall and Koroseal support sustainable construction practices offering **option e™** wallcoverings that meet the same characteristics of Type II vinyl but made from recycled materials that contribute to LEED® MR 4 & EQ 4. Contact Kwik-Wall for availability and pricing impacts.

Actual color provided may vary from swatch shown due to dye-lot variations. Room lighting may also change the color's appearance.



4650 Industrial Ave., Springfield, IL 62703
(800) 280-5945 • kwik-wall.com



USGBC
MEMBER

USGBC® and the related logo are trademarks owned by the U.S. Green Building Council® and are used with permission.