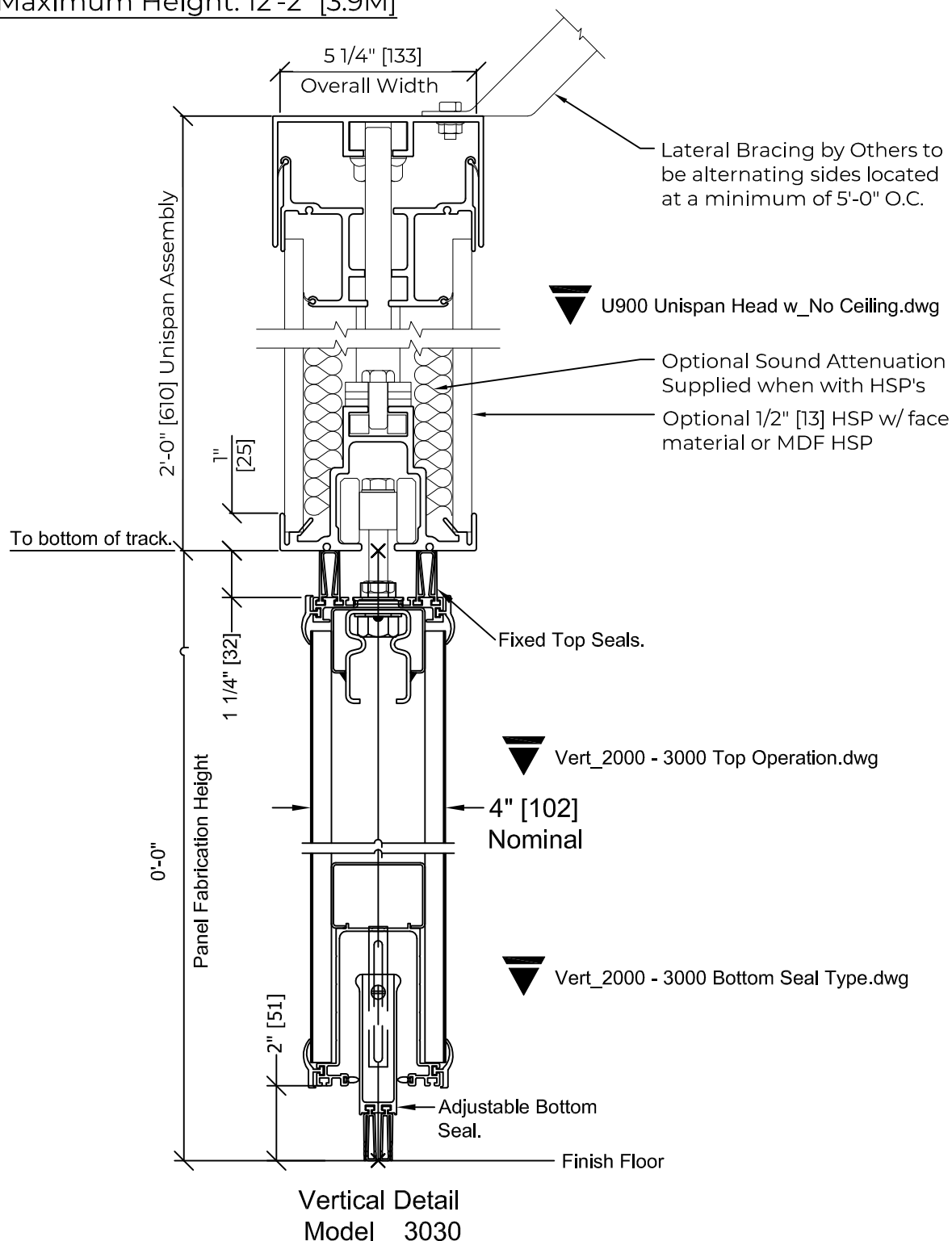


- Visibility States
  - HSP "Header Side Panels"
  - HSP+INSUL "Header Side Panels w/ Insulation"
  - HSP-NO (shown) "UniSpan Only"

NOTE: EXPLODE Command  
to reveal Dynamic features

Maximum Partition Height: 10'-2" [3.1M]

Maximum Height: 12'-2" [3.9M]



## U900 Unispan Head w\_Ceiling at Track.dwg

### • Visibility States

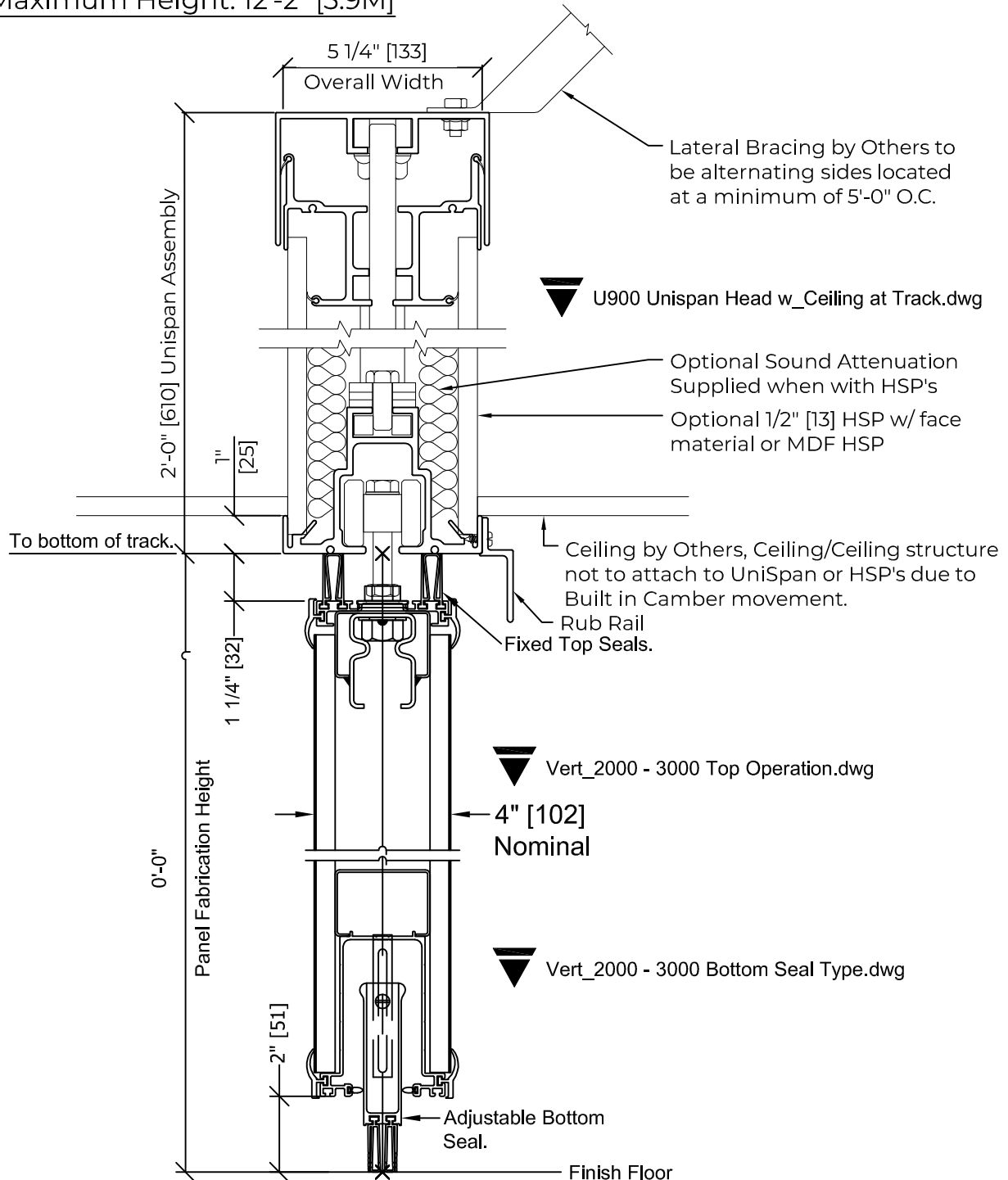
- HSP "Header Side Panels"
- HSP+INSUL "Header Side Panels w/ Insulation"
- HSP-NO (shown) "UniSpan Only"

NOTE: EXPLODE Command  
to reveal Dynamic features

Maximum Opening Width: 39'-8" [12M]

Maximum Partition Height: 10'-2" [3.1M]

Maximum Height: 12'-2" [3.9M]



U900 Unispan Head w\_Ceiling at Track.dwg

Vert\_2000 - 3000 Top Operation.dwg

Vert\_2000 - 3000 Bottom Seal Type.dwg

Vertical Detail  
Model 3030



## U900 Unispan Head w\_Raised Ceiling.dwg

- Visibility States

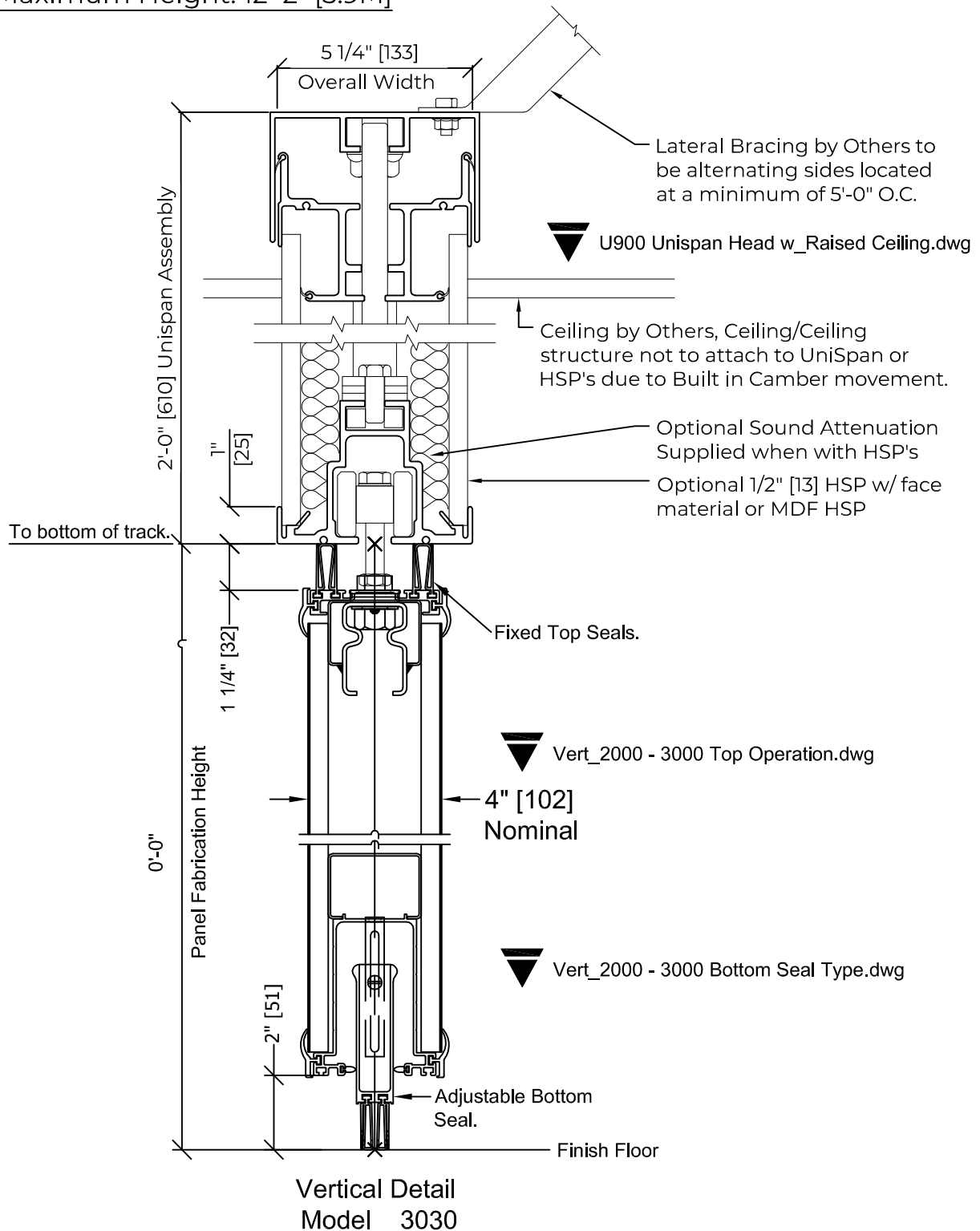
- HSP "Header Side Panels"
- HSP+INSUL "Header Side Panels w/ Insulation"

NOTE: EXPLODE Command  
to reveal Dynamic features

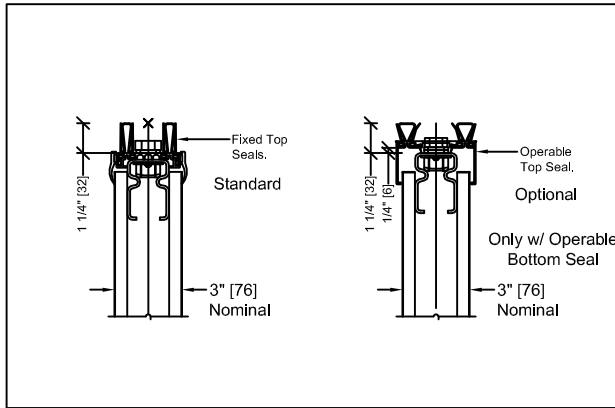
Maximum Opening Width: 39'-8" [12M]

Maximum Partition Height: 10'-2" [3.1M]

Maximum Height: 12'-2" [3.9M]

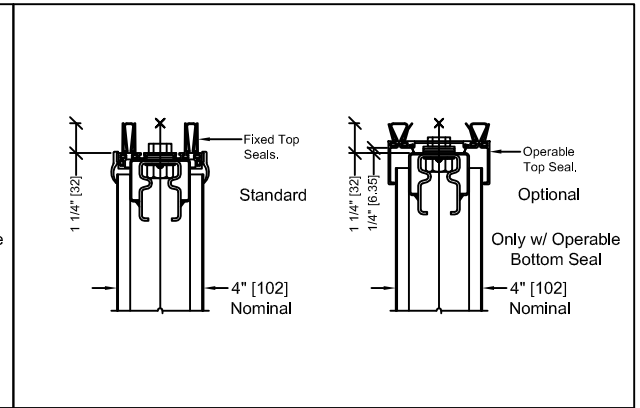


Model 2000 - Top Seal Condition



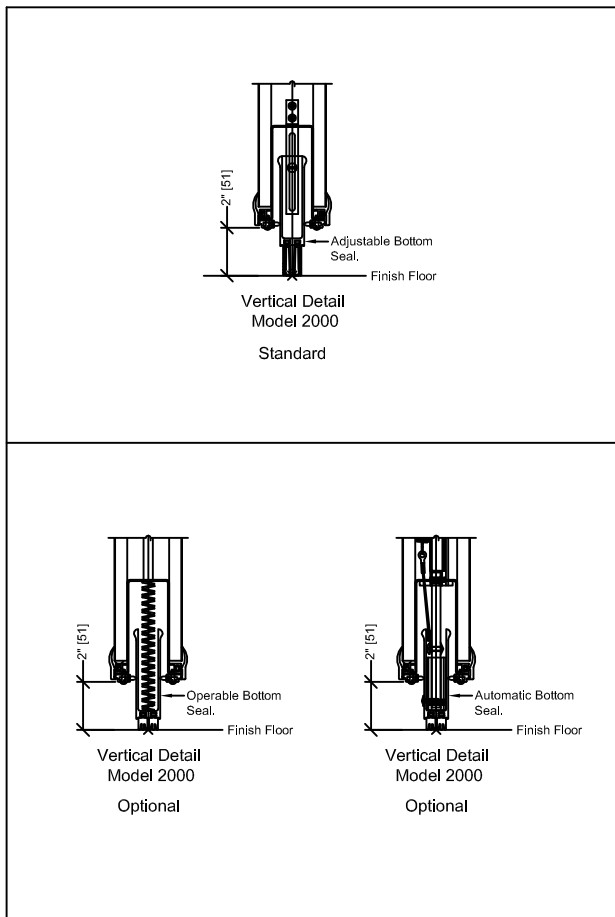
▼ Vert\_2000 - 3000 Top Operation.dwg

Model 3000 - Top Seal Condition



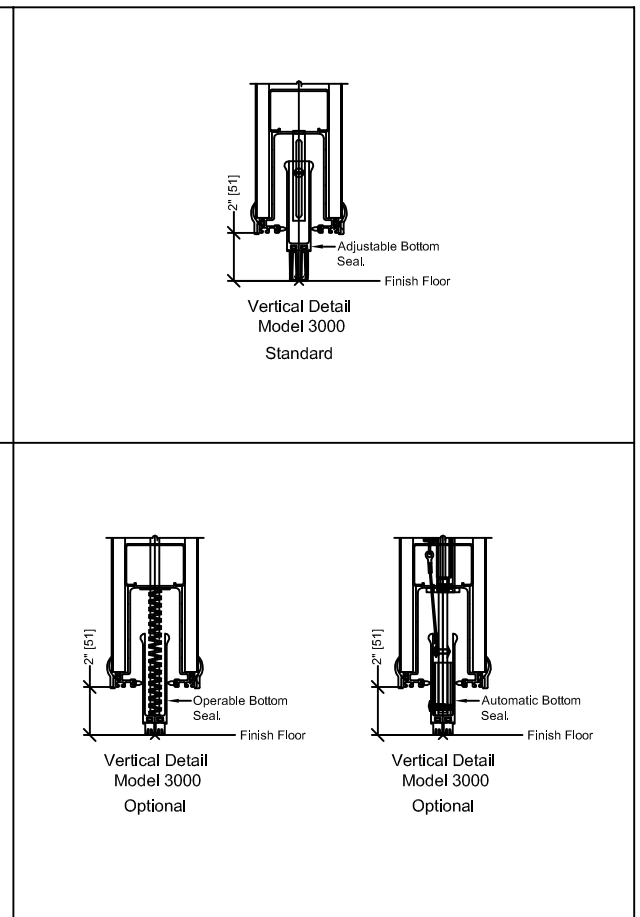
▼ Vert\_2000 - 3000 Top Operation.dwg

Model 2000 - Bottom Seal Condition

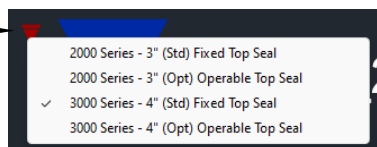


▼ Vert\_2000 - 3000 Bottom Seal Type.dwg

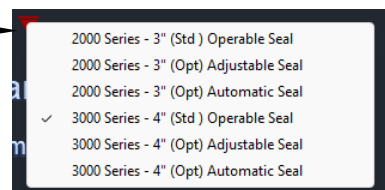
Model 3000 - Bottom Seal Condition



▼ Vert\_2000 - 3000 Bottom Seal Type.dwg

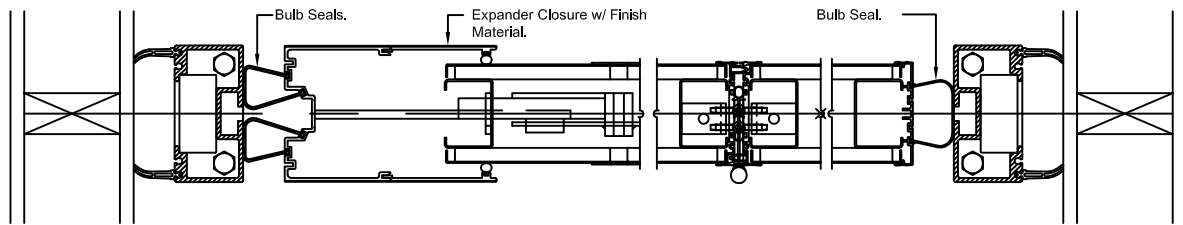


Select Triangle for Drop-down Menu



Select Triangle for Drop-down Menu



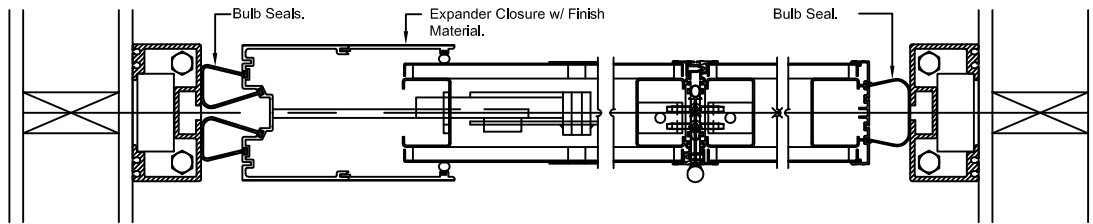


▼ 2000 3in Unispan Trail End Condition.dwg

▼ 2000\_3000 Horz Int Joint.dwg

▼ 2000 3in Unispan Lead End Condition.dwg

### 2030 Cap "Trimmed" Unispan Standard Post

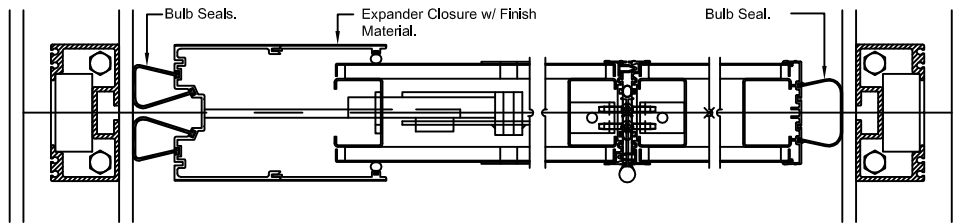


▼ 2000 3in Unispan Trail End Condition.dwg

▼ 2000\_3000 Horz Int Joint.dwg

▼ 2000 3in Unispan Lead End Condition.dwg

### 2030 Cap "Trimmed" Unispan Post w/ No Sweep

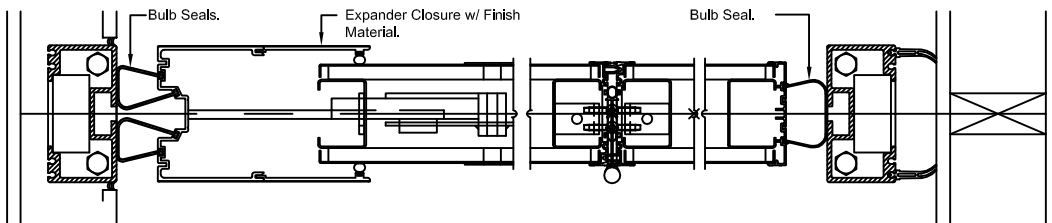


▼ 2000 3in Unispan Trail End Condition.dwg

▼ 2000\_3000 Horz Int Joint.dwg

▼ 2000 3in Unispan Lead End Condition.dwg

### 2030 Cap "Trimmed" Unispan IN Wall Post

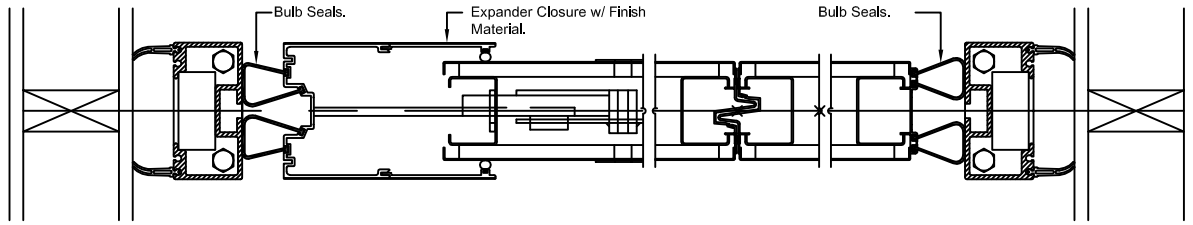


▼ 2000 3in Unispan Trail End Condition.dwg

▼ 2000\_3000 Horz Int Joint.dwg

▼ 2000 3in Unispan Lead End Condition.dwg

### 2030 Cap "Trimmed" Unispan Flush Wall Post

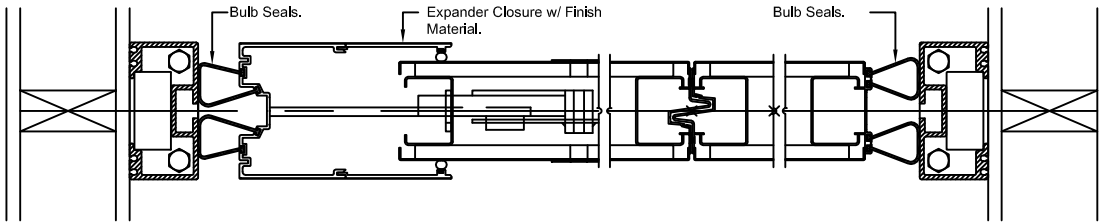


▼ 2000 3in Unispan Trail End Condition.dwg

▼ 2000\_3000 Horz Int Joint.dwg

▼ 2000 3in Unispan Lead End Condition.dwg

### 2030 Trimless Unispan Standard Post

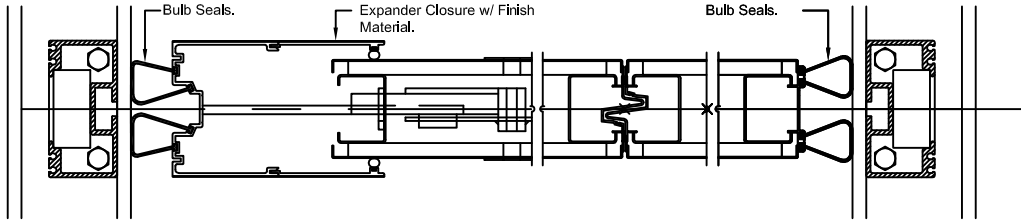


▼ 2000 3in Unispan Trail End Condition.dwg

▼ 2000\_3000 Horz Int Joint.dwg

▼ 2000 3in Unispan Lead End Condition.dwg

### 2030 Trimless Unispan w/ No Sweep

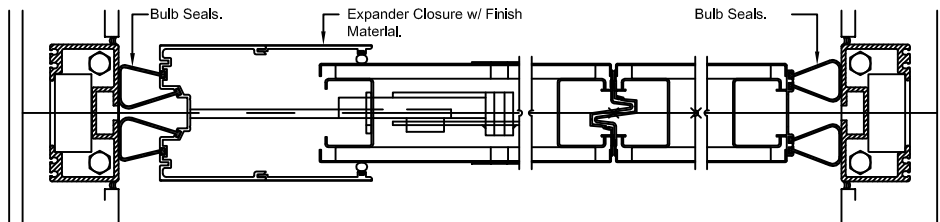


▼ 2000 3in Unispan Trail End Condition.dwg

▼ 2000\_3000 Horz Int Joint.dwg

▼ 2000 3in Unispan Lead End Condition.dwg

### 2030 Trimless Unispan IN Wall Post

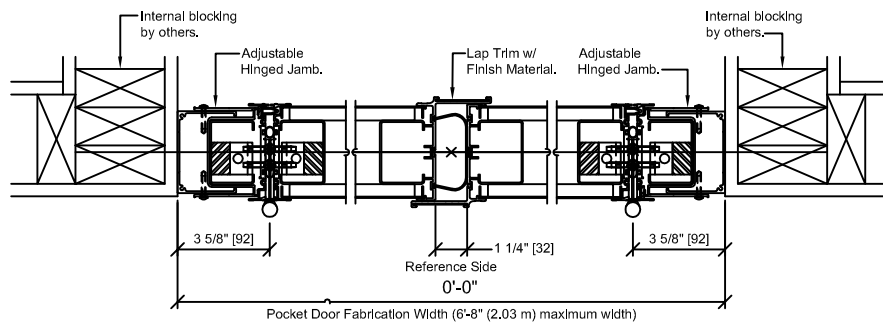


▼ 2000 3in Unispan Trail End Condition.dwg

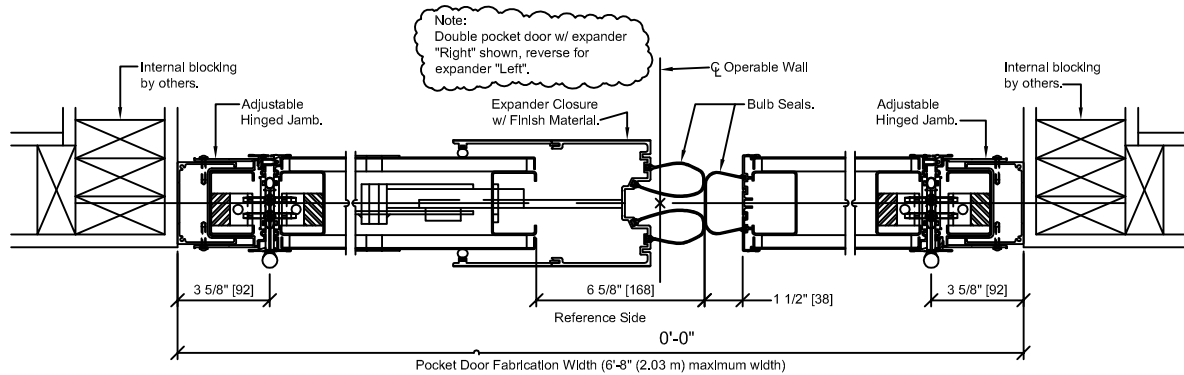
▼ 2000\_3000 Horz Int Joint.dwg

▼ 2000 3in Unispan Lead End Condition.dwg

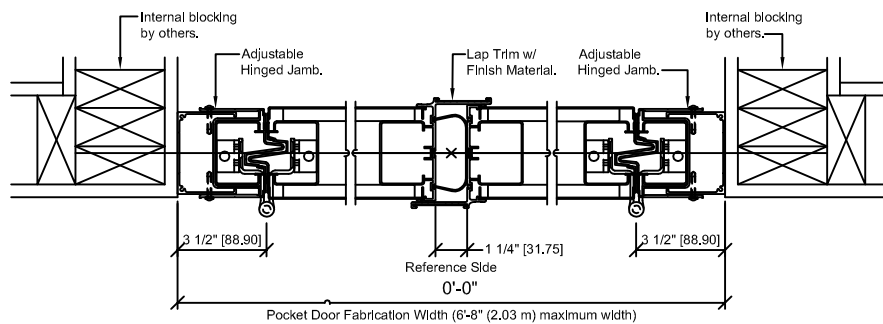
### 2030 Trimless Unispan Flush Wall Post



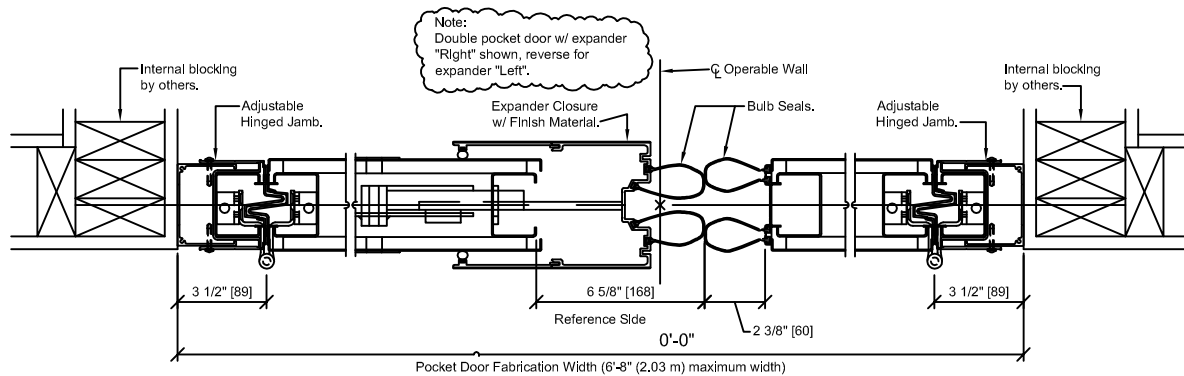
Horizontal Detail - w/ Cap-type Astragals  
Series 3000 Double Pocket Door w/ Lap Trim



Horizontal Detail - w/ Cap-type Astragals  
Series 3000 Double Pocket Door w/ Expander

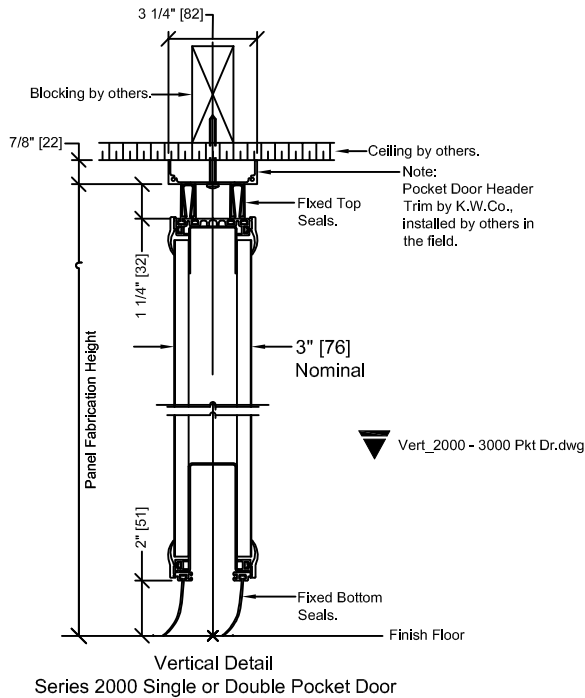


Horizontal Detail - w/ Trimless Astragals  
Series 3000 Double Pocket Door w/ Lap Trim

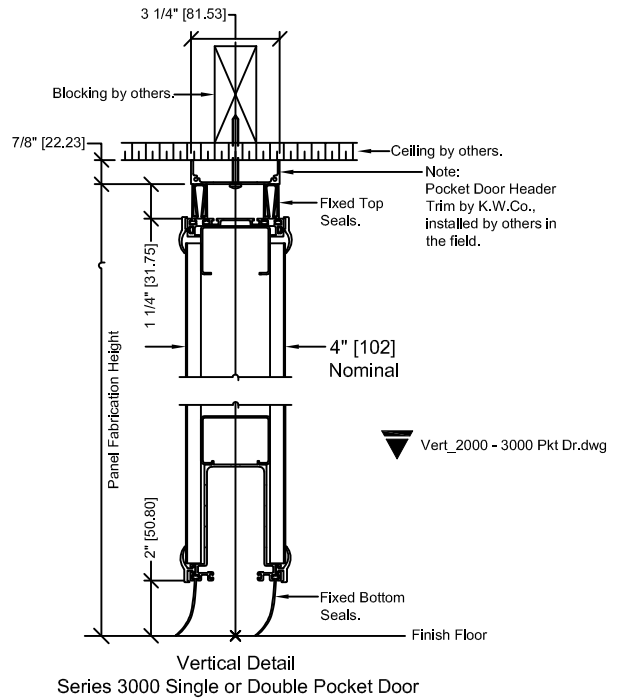


Horizontal Detail - w/ Trimless Astragals  
Series 3000 Double Pocket Door w/ Expander

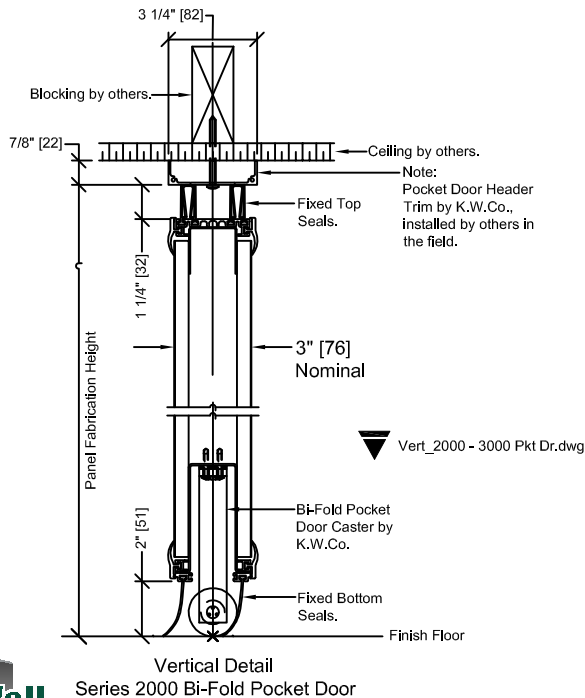
NOTE: Copy and Paste these Blocks into project. Or Insert the blocks per the Noted CAD name from Zip. Use the Triangle Drop-down Menus to meet your project requirement. Call Local Distributor if you have questions.



NOTE: Copy and Paste these Blocks into project. Or Insert the blocks per the Noted CAD name from Zip. Use the Triangle Drop-down Menus to meet your project requirement. Call Local Distributor if you have questions.



NOTE: Copy and Paste these Blocks into project. Or Insert the blocks per the Noted CAD name from Zip. Use the Triangle Drop-down Menus to meet your project requirement. Call Local Distributor if you have questions.



NOTE: Copy and Paste these Blocks into project. Or Insert the blocks per the Noted CAD name from Zip. Use the Triangle Drop-down Menus to meet your project requirement. Call Local Distributor if you have questions.

