

Unispan TECHNICAL DATA

Self-Supporting Truss System For Hinged Pair Systems

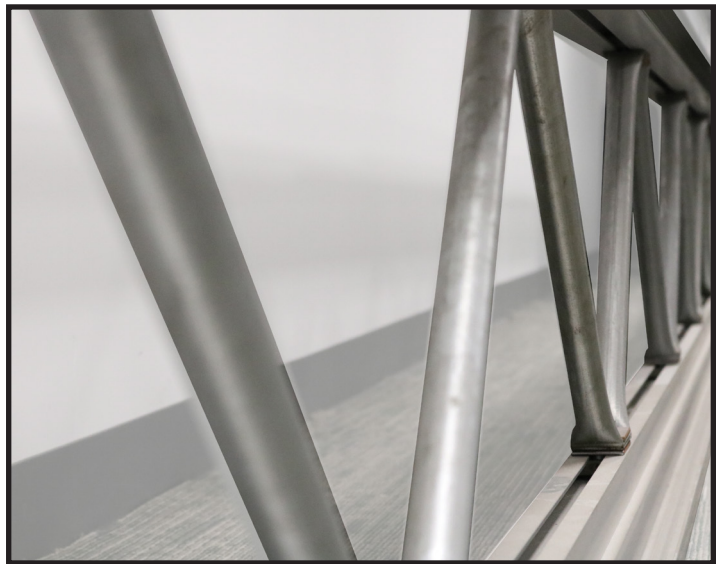
KWIK-WALL... One Source for Wall Systems.

The Unispan self-support system allows the use of paired or individual partitions in buildings with inadequate support to accommodate the hanging weight of operable partitions.

Consisting of a horizontal truss and two support columns, the system attaches to the building for lateral support only. It can be relocated if the owner wishes to reconfigure the space in the future.

The truss accommodates sound baffle panels and insulation for areas requiring sound control.

The truss is to be shipped in sections and assembled on site for custom assembly, which meets site conditions.



Approximate Maximum Opening Width to: 39'8" [12.09m]

Approximate Maximum Height to: 12'2" [3.7m]

Approximate Maximum Partition Height to: 10'2" [3.1m]

Maximum widths and heights are determined by the weight of the partition used in the Unispan. Contact your KWIK-WALL Representative for special requirements.



1.01 WORK INCLUDED

- A. Unispan System shall be furnished, installed and serviced by KWIK-WALL's authorized distributor, in compliance with the architectural drawings and specifications contained herein.

1.02 RELATED WORK

- A. Opening Preparation: Proper and complete preparation of the Unispan system opening shall be by others in accordance with ASTM E 557, and shall include floor leveling; plumbness of adjoining permanent walls; substrate and/or ceiling tile enclosures for the Unispan system; and the painting and finishing of trim and other materials adjoining the head and jamb areas of the operable wall. Any deviation of site conditions contrary to approved shop drawings must be called to the attention of the architect.
- B. Insulation: Sound insulation and baffles for the plenum area above the track system, under the permanent floor, inside air ducts passing over or around the operable wall, and in permanent walls adjoining the operable wall system shall be by others, in accordance with ASTM E 557.
- C. Opening Preparation: Proper and complete preparation of the operable wall system opening shall be by others in accordance with ASTM E 557, and shall include floor leveling; plumbness of adjoining permanent walls; and the painting and finishing of trim and other materials adjoining the head and jamb areas of the operable wall.

1.03 SYSTEM DESCRIPTION

- A. The Unispan system is a self-supporting truss system for use with operable partitions.

1.04 QUALITY ASSURANCE

- A. The Unispan system shall be validated by calculations performed by a licensed professional engineer.
- B. The Unispan system shall be installed by KWIK-WALL's authorized distributor in accordance with ASTM E 557.

1.05 REFERENCES

- A. ASTM E 90: Laboratory Measurement of Airborne-Sound Transmission Loss of Building Partitions.
- B. ASTM E 413: Determination of Sound Transmission Class (STC).
- C. ASTM E 557: Architectural Application and Installation of Operable Partitions.
- D. ASTM E 84: Surface Burning Characteristics of Building Materials.
- E. ASTM A 653: Specification for General Requirements for Steel Sheet, Alloy-Coated (Galvannealed) by the Hot Dip Process.
- F. ASTM C 423: Standard Test Method for Sound Absorption and Sound Absorption Coefficients by the Reverberation Room Method.
- G. CCC-W-408A: Federal Specification which applies to Vinyl Coated Wall Coverings.
- H. CFFA-W-101-D: Chemical Fabrics and Film Association Quality Standard for Vinyl Coated Fabric Wall Coverings.

1.06 SUBMITTALS

- A. Manufacturer shall provide prior to fabrication written technical information and related detail shop drawings, which demonstrate that the products comply with contract documents. Include elevations, sections, and details. Indicate dimensions, weights, conditions at openings and at storage areas.
- B. KWIK-WALL shall provide detailed engineering drawings featuring track plan, panel elevation, horizontal and vertical details and beam punching template as required.
- C. KWIK-WALL shall provide written instructions specifying the proper operation and maintenance of the operable wall system.

1.07 DELIVERY, STORAGE AND HANDLING

- A. Panels shall be individually wrapped in a protective plastic covering to keep panels clean during delivery, storage and handling.
- B. Truss system shall be shipped in sections and assembled on site.
- C. Panels shall be stored on edge and above the floor on cushioned blocking in a dry and ventilated area, protected from humidity and temperature extremes.

1.09 WARRANTY

- A. Manufacturer shall warrant each Unispan system and its component parts to be free from defects in material and workmanship for a period of ten (10) years from the date of delivery to the original purchaser when installed by an authorized KWIK-WALL distributor. (Contact your local KWIK-WALL Distributor or KWIK-WALL Company for complete warranty information.) (see actual warranty on Page 8 for details and limitations).



2.01 ACCEPTABLE MANUFACTURER

- A. Self-Supporting truss shall be a Unispan system as manufactured by KWIK-WALL Company. Manufacturers wishing to bid products equal to the product specified must submit to the architect 10 days prior to bidding complete data in support of compliance. The submitting manufacturer guarantees the proposed substituted product complies with the performance items specified and as detailed on the drawings.
- B: Unispan to be manufactured in the USA by an American owned company.

2.02 CONSTRUCTION

- A. The supporting truss shall be factory fabricated of steel and aluminum.
1. Unispan is attached to the building structure for lateral support only. The load of the truss and partition is supported by the Unispan column posts.
 2. Track. Hinged paired panel tracks accepting of Type 40 carriers must be integrated into the truss to allow Kwik-Wall operable partitions to be installed directly onto the system. The use of steel tube and I-beams is not allowed if threaded rods and track must be attached to these types of expandable truss systems.
 3. Posts. End columns shall be 2-1/2" x 5" [63.5 x 127] clear anodized aluminum posts. Posts shall be attached to the truss with steel brackets and bolts. Posts shall be anchored to the floor with concealed fasteners. Posts shall be located approximately 1-1/2" [38] from adjacent wall surfaces. The space between the post and the adjacent wall shall be fitted with a vinyl gasket to inhibit sound.
 4. Ceiling Anchors and sway bracing. Ceiling anchors provide lateral support and shall be set at intervals across the span of the beam. Blocking for ceiling anchors to be provided by others in accordance with the plans.
- B. Weight of System:
1. The horizontal truss shall weigh 10-12 lbs. per lineal foot of width.
 2. The support columns shall weigh 3.5 lbs. per foot of height each.
 3. The floor shall support a maximum of 360 psi at each post.

2.03. FINISHES

- A. Finish Material Type:
1. Exposed trim and track shall be of clear anodized architectural grade extruded aluminum alloy 6063-T6.
 2. Posts shall be of clear anodized architectural grade extruded aluminum alloy 6063-T6.

2.04 OPERATION

- A. Operation of panels installed in the Unispan system shall be (Select):
1. Hinged Pairs, consisting of panels hinged together in groups of two (2) unless otherwise specified. Panels shall be top-supported by one (1) carrier in each panel.
- B. See specifications for Kwik-Wall models 2000 and 3000 series models for panel operation details.
- C. The Kwik-Span system may be disassembled and moved to a similar space to adapt to the end user's changing needs.

2.05 UNISPAN ACCESSORIES/OPTIONS

- A. Header side Panels: (to cover sides of truss if it is below the ceiling). Base substrate constructed of Medium Density Fiberboards spliced together with custom extruded aluminum "H" splices.
- B. Optional face finishes select below.
1. Vinyl color to be selected from partition manufacturer's standard line.
 2. Fabric color to be selected from Kwik-Wall's standard line.
 3. Carpet color to be selected from Kwik-Wall's standard line.
 4. Wood Veneer color to be selected from Kwik-Wall's standard line.
 5. High-Pressure Laminate color to be selected from Kwik-Wall's standard line.
 6. Unfinished for field finishing



PART 3 – EXECUTION

3.01 INSTALLATION

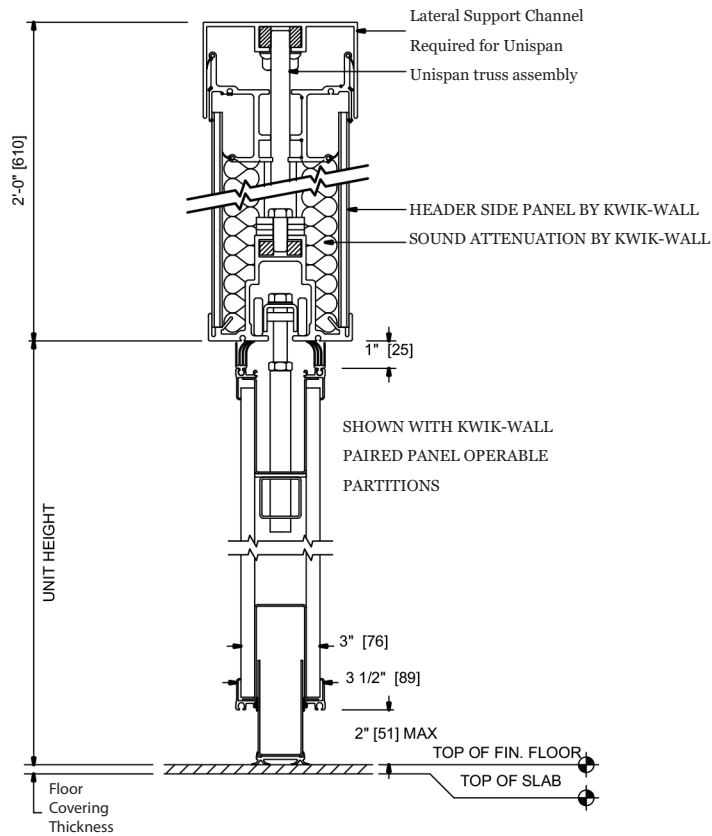
- A. The complete installation of the Unispan self-support system shall be by an authorized factory-trained installer and be in strict accordance with the approved shop drawings and manufacturer's standard printed specifications, instructions, and recommendations.

- B. The Unispan shall be installed in accordance with Kwik-Wall's written instructions, shop drawings, and ASTM E 557 installation guidelines.

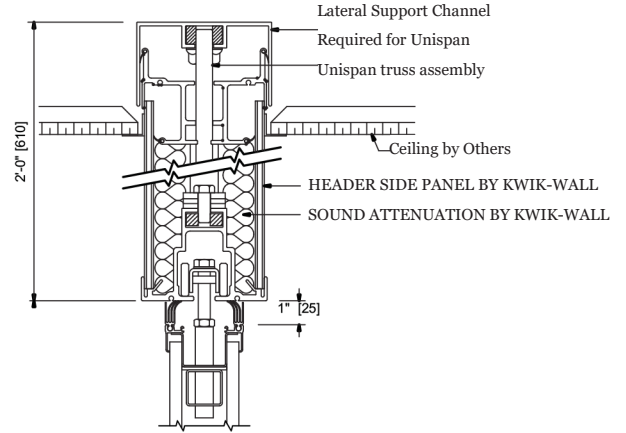
3.02 ADJUSTING AND CLEANING

- A. The Unispan system shall be adjusted and cleaned in accordance with Kwik-Wall's written instructions

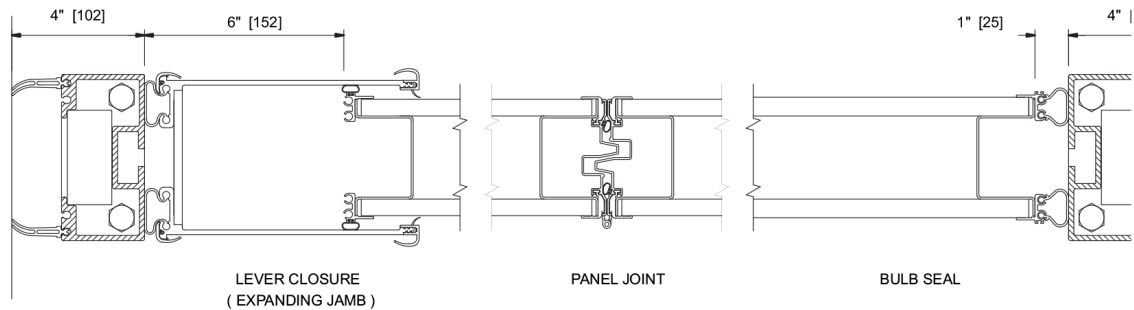
VERTICAL SECTION



OPTION BELOW: Horizontal truss partially exposed below lay-in ceiling



HORIZONTAL SECTION



Stack Size: To determine the stack depth, refer to the specifications for the operable partition model used in the Unispan. Remember to add 4" [102] for the support column (a/k/a post).

NOT TO SCALE



This page intentionally left blank

This page intentionally left blank

Manufacturer shall warrant each Unispan system and its component parts to be free from defects in material and workmanship for a period of ten (10) years from the date of delivery to the original purchaser when installed by an authorized KWIK-WALL distributor KWIK-WALL Company reserves the rights to have authorized personnel inspect any part alleged to be defective and to refuse any returned material unless the return was previously authorized by KWIK-WALL.

This warranty does not apply to any damage or deterioration caused by abuse or failure to provide reasonable and necessary maintenance. All field applied finishes, accessories or product modifications are specifically excluded under this warranty. KWIK-WALL's liability hereunder is limited to the replacement of any panel or component part found to be defective. Labor charges are the responsibility of the customer.

In order to keep the warranty valid, routine maintenance must be performed in accordance with manufacturer's specifications on the operable wall system. A maintenance log must be maintained indicating dates, type of service performed and the certified Kwik-Wall distributor who performed the service.

KWIK-WALL SHALL NOT BE LIABLE FOR ANY CONSEQUENTIAL OR INCIDENTAL DAMAGES. ALL OTHER WARRANTIES EXPRESSED OR IMPLIED INCLUDING ANY IMPLIED WARRANTY OF MERCHANTABILITY ARE HEREBY EXPRESSLY EXCLUDED.

Some states do not allow the exclusion or limitation of consequential or incidental damages, so the above limitation or exclusion may not apply to you. This warranty gives you specific legal rights, and you may have other rights, which vary from state to state.

Note:

Due to ongoing research and development, some variation may occur in product specifications and design. Please refer to your actual KWIK-WALL shop drawing(s) for exact product dimensions and specifications.

Distributed By:

