



STANDARD VINYL

OPERABLE WALLS & ACCORDION PARTITIONS



Transforming Space Into
POSSIBILITIES

Classics



Kashi, Silver Fan, KWC-19



Linden, Dover Gray, KWC-5



Linden, Rectory, KWC-3



Lino, Skylight, KWC-11



Patana, Frost, KWC-34

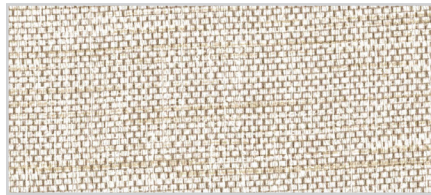


Tahiti, Surfside, KWC-17

Ramie



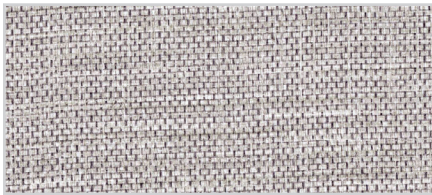
Mesh, KCS-1



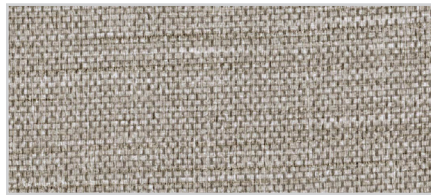
Nettle, KCS-2



Fused, KCS-3



Tangle, KCS-4



Spun, KCS-5



Rolled, KCS-6

Orleans



Inscription, KCS-7



Joie de Vivre, KCS-8



Zydeco, KCS-9



Fine Silver, KCS-10



Beignet, KCS-11



French Quarter, KCS-12

Hurstbourne



Mink, KCS-13



Tuxedo, KCS-14



Truffle, KCS-15



Ionic Grey, KCS-16



Inkwell, KCS-17



Magnolia, KCS-18

Bengal



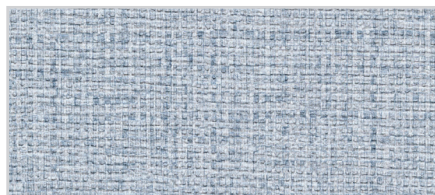
Cotton, KCS-19



Silk, KCS-20



Cloth, KCS-21



Stitch, KCS-22



Origin, KCS-23



Artisan, KCS-24

Linden II



Linen, KCS-25



Bone, KCS-26



Eggshell, KCS-27

Lino



Hemline, KCS-28



Clothesline, KCS-29



Draperie, KCS-30

Koroseal®

3875 Embassy Parkway
Fairlawn, OH 44333
855.753.5474 · koroseal.com

PATTERNS

Kashi · Linden · Patana · Tahiti
Ramie · Orleans · Hurstbourne
Bengal · Linden II · Lino

	US UNITS	METRIC UNITS
<i>Total Weight</i>	20.0 oz. PLY	620 g PLM
<i>Roll Width</i>	52" – 54"	132 cm – 137 cm
<i>Backing</i>	Woven (Osnauburg)	
<i>Tensile (Minimum)</i>	50 x 55 lb _f	222 x 245 N
<i>Tear (Minimum)</i>	25 x 25 lb _f	111 x 111 N
<i>Federal Spec</i>	CCC-W-408D, Type II	
<i>WA Spec.</i>	WA-101, Type II	
<i>ASTM F-793</i>	Category V, Type II	
<i>Fire Testing</i>	NFPA 101® Life Safety Code® NFPA 255 (ASTM E-84, CAN S102M) Tunnel Test ¹ Class A Rating Flame Spread – 10 Smoke Developed – 5 NFPA 286 Corner Burn Test ² Meets requirements for Flame Spread, Smoke Developed and Flashover	
<i>CE Certification</i>	EU Classification in accordance with EN 15102:2007 + A1:2011	
<i>Indoor Air Quality</i>	California 01350 – Meets emission requirements for schools and offices	
<i>Repeat</i>	N/A	
<i>Vertical</i>	N/A	
<i>Horizontal</i>	N/A	
<i>Nominal Pattern Width</i>	51"	
<i>Match Information</i>	Reverse Hang, Random Match – all patterns except: Linden II: Random Match, Non-Reverse Hang	

1. When applied to GRC board with A-848-B adhesive
2. When applied to 5/8" Type-X-Gypsum board with A-848-B adhesive

Kwik-Wall™ standard and upgrade vinyls are supplied by Koroseal®. Both Kwik-Wall and Koroseal support sustainable construction practices offering *option e™* wallcoverings that meet the same characteristics of Type II vinyl but made from recycled materials that contribute to LEED® MR 4 & EQ 4. Contact Kwik-Wall for availability and pricing impacts.

Actual color provided may vary from swatch shown due to dye-lot variations. Room lighting may also change the color's appearance.

Actual color provided may vary from swatch shown due to dye-lot variations. Room lighting may also change the color's appearance.

All of our Koroseal standard and upgrade vinyl finishes contain mildew and staph-resistant additives in the vinyl and plastisol. This provides the wallcovering with resistance to the growth of mildew and bacteria, including mold, fungi, pink stain and black fungal stain.



4650 Industrial Ave., Springfield, IL 62703, (800) 280-5945 · kwik-wall.com



USGBC® and the related logo are trademarks owned by the U.S. Green Building Council® and are used with permission.