

GALAXY•STRATUS•WHISPER

HIGH PERFORMANCE WOVENS

SPECIFICATIONS

	GALAXY	STRATUS	WHISPER
WIDTH:	54"	54"	55"
TOTAL WEIGHT:	15 oz. per linear yard	13 oz. per linear yard	10.8 oz. per linear yard
BACKING:	Acrylic	Acrylic Latex	Acrylic
CONTENT:	70% Polyester, 30% Post-Consumer Recycled Polyester	51% Polyester, 49% Olefin	58% Polyester, 42% Olefin
FINISH:	Stain Repellent		
INSTALLATION:	Non-Reversible / Random Match		

PERFORMANCE

FLAMMABILITY:	Passes ASTM E-84 Class A Tested in Accordance with CAN/ULC-S102 Tested in Accordance with (EN13501): B-s1,d0 rating	
COLORFASTNESS TO LIGHT:	GALAXY, STRATUS (AATCC Method 16): Class 5 (40 hours)	WHISPER (AATCC Method 16): Class 4 (40 hours)

QUALITY STANDARDS

ENVIRONMENTAL:	Created with No PVC, No Heavy Metals or Formaldehyde, No ODSs, No Phthalates, No VOCs
CLEANING CODE:	WS & BC – Water/Solvent & Bleach Cleanable

INSTALLATION

Swatch color may differ from production due to dye-lot variations. Lighting within a space may also alter color appearances.

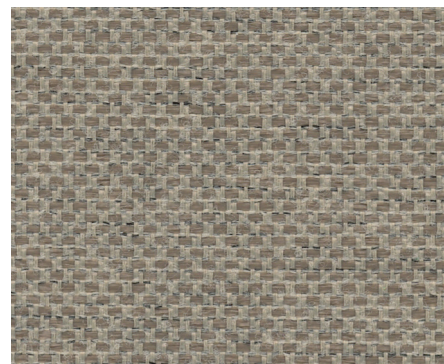
Shown on Front: Stratus 39-31



GALAXY 194-08



STRATUS 39-25



WHISPER 197-05



WWW.KWIK-WALL.COM



The assigned numerical reading and other tests referenced in this text are not intended to reflect hazards presented by this or any other material under actual fire cognitions. Consult an architect or fire safety engineer for information on applicable building codes and reduction of fire hazards, including the use of sprinklers.