

Transforming Space Into POSSIBILITIES



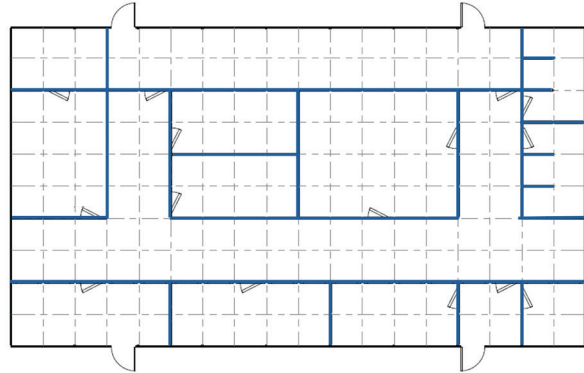
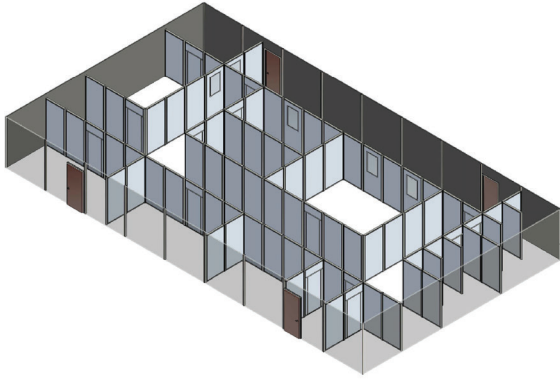
TECHNICAL CAPABILITIES: Tactical Training Walls



FlexTact® Tactical Training Walls

Kwik-Wall's FlexTact Tactical Training Walls are highly flexible, situational training environments designed for high-impact simulation training. FlexTact features rigid panel faces, steel frames, retractable bottom seals, durable edge trim, and a wide range of add-ons tailored to specific training requirements.

FlexTact® Tactical Training Walls



Based on a 4' x 4' multi-directional track grid layout that enables rapid reconfiguration into different simulated building scenarios, FlexTact is the most proven, efficient, easy-to-configure, and feature-rich flexible training solution available in the market today!



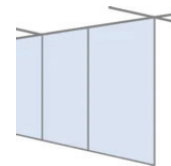


FlexTact® Tactical Training Walls

Technical Data

FlexTact® — Tactical Training Walls

SECTION 11 67 23 – SHOOTING RANGE EQUIPMENT
SECTION 10-22-39 – CUSTOM OPERABLE PARTITIONS



Overview

Panel Thickness

☒ 3"

Operation

☒ Manual

Configuration

- ☒ Multiple - X, L, T 90° intersections.
- ☒ Track layout on 4'-0" x 4'-0" grid

Panel Types

- ☒ Pass doors
- ☒ Window cut-outs
- ☒ Standard intermediate panels

Suspension

- ☒ Top supported from building structure
- ☒ Top supported from **Unispan** partition support

System Weight

☒ Panels + Track 9.0 lbs./sq.ft. [44kg/m²]

Bottom Seals

☒ Retractable, up to 100 lbs. of downward force

Top Seals

☒ Not Required

Impact Resistant Finishes

- ☒ Kwik-Wall standard Wilsonart HPL (single color)
- ☒ Other HPL – (requires Kwik-Wall approval)

Field Replaceable Panel Skins

☒ Yes

Panel Edge Trim

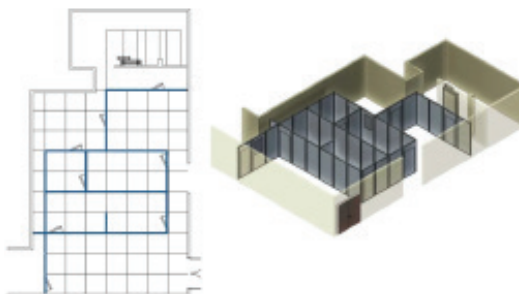
- ☒ Protects the panels from damage during rigorous training sessions
- ☒ Vertical PVC seals allow for fast panel layout scenario reconfiguring

Options

- ☒ 4' x 4' Marker Boards (by Kwik-Wall)
- ☒ Above mount video cameras (by others)
- ☒ Mezzanine construction (by others)

Kwik-Wall's **FlexTact** Tactical Training Walls are highly flexible, situational training environments designed for high-impact simulation training. Featuring steel frames, retractable bottom seals, durable HPL-faced MDF, protective edge trim and more, plus a wide range of add-ons based on your situational training needs.

Utilizing a 4' x 4' grid layout with X, L and T track intersections for fast scenario set up, **FlexTact** is the industry's most proven, easy to configure and flexible tactical scenario training solution available on the market today.

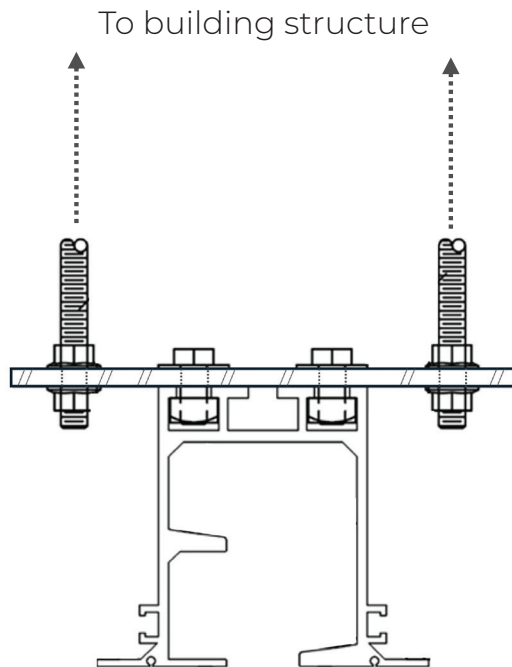


More Information

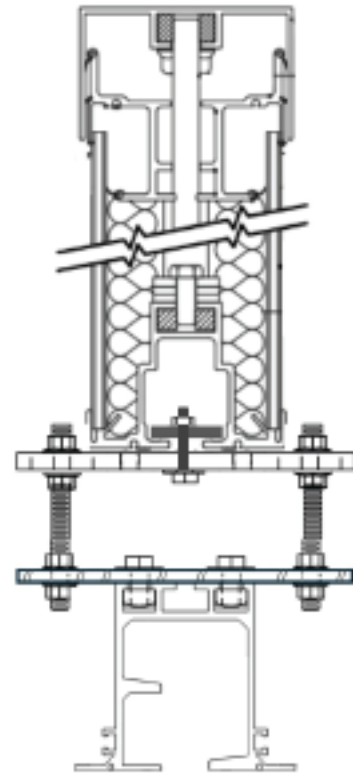


TRACK – FLEXTACT

FlexTact Tactical training walls utilize operable wall track that attaches to your building's structure or can alternately be integrated with Kwik-Wall's Unispan self support trusses when building structural support is inadequate or unavailable. Standard 90 degree 4' x 4' grid layout is comprised of X L and T track intersections allow quick set-up and reconfiguration into different training scenarios.



FlexTact 425 track



FlexTact 425 Track supported
by KW Unispan support truss

WARRANTY: Our confidence in the engineered load-bearing capacity, durability, operational ease and aesthetics that are built into all of our track systems, allows us to offer the best track & carrier warranty in the industry: **10 years on every manually operated track and carrier system we manufacture!**



More Information