

Transforming Space Into POSSIBILITIES



TECHNICAL CAPABILITIES: Partition Support Systems



Unispan® | Kwik-Span™ Partition Support Systems

Kwik-Wall's partition support systems – The perfect solution for the high cost and long lead times that typically accompany structural support options for operable partitions, Kwik-Wall partition support options can reduce project cost, schedule impact and project management overhead when compared to the traditional design, fabrication and installation. Single source both support and operable wall partition from your local Kwik-Wall distributor to reduce risk, save time and money!

• Unispan® • Kwik-Span™

Kwik-Wall offers two distinct partition support systems – **Unispan®** and **Kwik-Span™**. Both pre-engineered open truss designs provide the live load structural support for exact partition weight and span.

UNISPAN – Select Unispan when access allows for up to three sections, equaling the partition opening width, to be situated in the partition's location, and subsequently connected into one span-length truss. At 24" deep. Unispan can be fully recessed or fully exposed below ceiling with partition-matching truss side panels.



KWIK-SPAN – Select Kwik-Span if the partition's location cannot be accessed easily with up to 21 ft. long Unispan truss sections eg: a high-rise commercial building above the ground floor or where exterior window removal and re-install is cost-prohibitive. Kwik-Span is fully assembled at the partition's location and Kwik-Span component parts can easily be transported in a building's service elevator.





UNISPAN® U900 — Partition Support

SECTION 10 22 26 – OPERABLE PARTITIONS

SECTION 10-22-39 – FOLDING PANEL PARTITIONS



Overview

Truss Type

- ☒ Open Web, Aluminum & Steel

Install Options

- ☒ Fully recessed above ceiling
- ☒ Below ceiling with matching header side panels
- ☒ Partial recessed above and below ceiling

Maximum Opening Width

- ☒ 39'-8"

Maximum Load Capacity

- ☒ Not to exceed 100 lbs./lin. ft.

Connections to Building Structure

- ☒ At perimeter post floor brackets
- ☒ Sway bracing to building structure required

Truss Depth

- ☒ 24"

Truss Sections

- ☒ 1, 2, or 3 sections based on opening width

Operable Wall Configurations

- ☒ Centerline paired panels
- ☐ Multi-directional panels (coming soon)

Truss Finish (Visible)

- ☒ Clear anodized aluminum

Truss Side Panels

- ☒ Side panel finish matches panel finish
- ☒ Optional finish – (contact Kwik-Wall)

Post Dims. and Load Maximum PSI

- ☒ 6063-T6 Clear Anodized Alum. 2.5" x 5"
- ☒ Floor shall support a max. 360 psi @ ea. post

Post Location

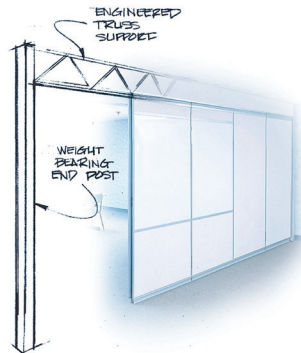
- ☒ Fully recessed into perimeter wall
- ☒ Partially recessed into perimeter wall
- ☒ Surface mounted at perimeter wall

Seismic Rating

- ☒ Adheres to Zone 4 seismic requirements

Unispan's pre-engineered partition support system is the perfect solution to the high cost and long lead times associated with typical steel wide flange beam and steel post partition support. Unispan's lightweight truss sections with built-in track bolt together in the field.

Single-sourcing your Unispan operable wall support with your Kwik-Wall operable partition can save significant schedule time by eliminating the additional project management costs associated with structural engineering calcs, steel beam suppliers, fabricators and installers. Unispan significantly reduces your total cost, effort and risk!



More Information



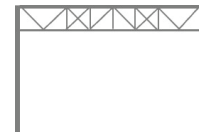
Partition Support Systems Technical Data

UNISPAN • **KWIK-SPAN**

KWIK-SPAN™ — Partition Support

SECTION 10 22 26 – OPERABLE PARTITIONS

SECTION 10-22-39 – FOLDING PANEL PARTITIONS



Overview

Truss Type

- ☒ Open Web, Aluminum & Steel

Install Options

- ☒ Fully recessed above ceiling
- ☒ Below ceiling with matching header side panels
- ☒ Partial recessed above and below ceiling

Maximum Opening Width

- ☒ Contact Kwik-Wall

Maximum Load Capacity

- ☒ Contact Kwik-Wall

Connections to Building Structure

- ☒ Perimeter posts transfer weight to floor
- ☒ Sway bracing to building structure required

Truss Depth (Variable)

- ☒ 24-48" (partition weight dependent)

Truss Components

- ☒ Site assembled at partition location

Operable Wall Configurations

- ☒ Centerline paired panels
- ☐ Multi-directional panels

Truss Finish (Visible)

- ☒ Clear anodized aluminum

Truss Side Panels (Below Ceiling Mount)

- ☒ Side panels match partition finish
- ☒ Optional finishes – (contact Kwik-Wall)

Posts & Post Load Requirements

- ☒ 6063-T6 Clear Anodized Alum. 2.625" x 4.75"
- ☒ Floor shall support a max. 360 psi @ ea. post

Post Location

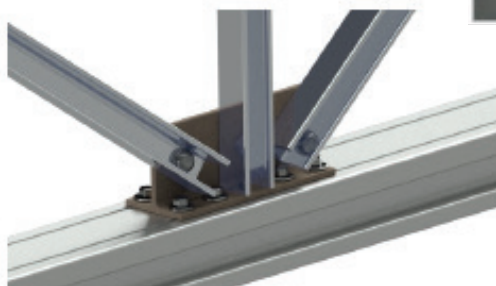
- ☒ Fully recessed into perimeter wall
- ☒ Partially recessed into perimeter wall
- ☒ Surface mounted at perimeter wall

Seismic Rating

- ☐ Adheres to Zone 4 seismic requirements

Kwik-Span pre-engineered partition support is the perfect solution to the high cost and long lead times associated with typical steel beam and post partition support. Lightweight truss components can transport in elevators and be assembled onsite at partition location.

Single-sourcing your **Kwik-Span** operable wall support with your Kwik-Wall operable partition can save significant schedule time by eliminating the additional project management costs associated with structural engineering calcs, steel beam suppliers, fabricators and installers. **Kwik-Span** significantly reduces your total cost, effort and risk.



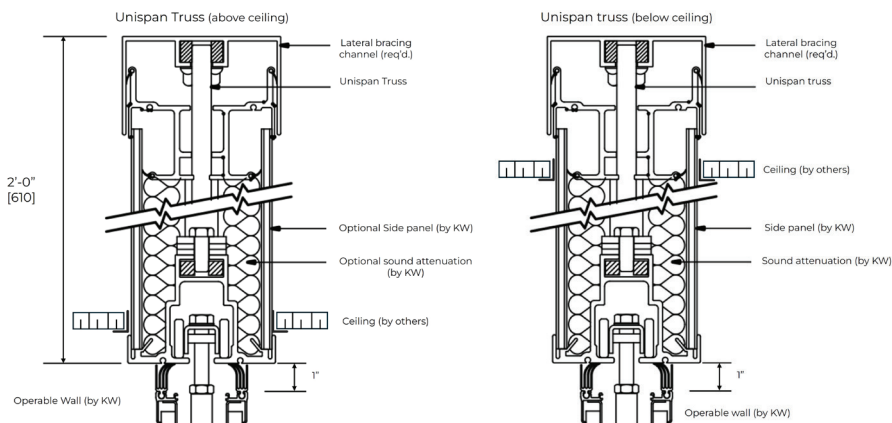
More Information



TRACK – PARTITION SUPPORT SYSTEMS

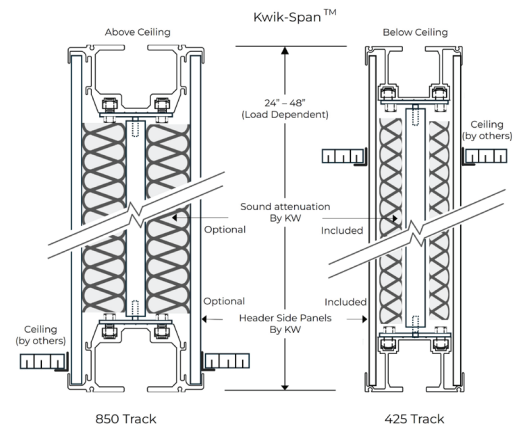
Unispan and kwik-Span Partition Support Systems from Kwik-Wall are pre-engineered for the exact partition opening width and live load they support. Both are open web truss designs utilizing the operable partition track for the specific partition weight as the bottom chord of the truss design, allowing for efficient panel loading, durability and smooth panel operation!

UNISPAN®



Type 40 Track

KWIK-SPAN™



425 Track

850 Track

WARRANTY: Our confidence in the engineered load-bearing capacity, durability, operational ease and aesthetics that are built into all of our track systems, allows us to offer the best track & carrier warranty in the industry: **10 years on every manually operated track and carrier system we manufacture!**



UNISPAN
More Information