



Operable Walls by Kwik-Wall Technical Data

3000 SERIES · 2000 SERIES · HUF COR 600 SERIES

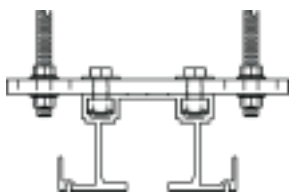
TRACK — OPERABLE WALL

Each and every **Kwik-Wall Operable Wall** track system is engineered and rigorously tested for the actual size and weight/sq. ft. of your partition, based on the specified panel construction and STC rating. Aluminum extruded tracks have continuous attachment raceways for connecting to partition support structure; crisp, clean lines with built-in ceiling return flange to protect surrounding finishes; and alignment pin slots for optimum track performance across track joints. For tall, heavier panels, our performance steel track systems give you confidence that your operable partitions will give years of trouble-free operation.

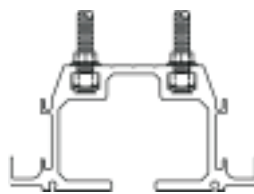
Aluminum Track Systems



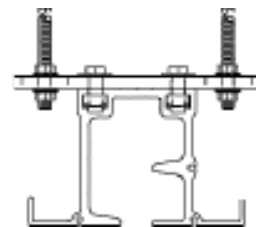
Type 425
Multi-Directional



Type 425
Hinged-Pairs

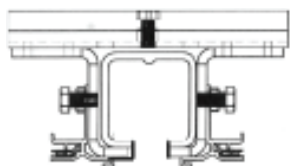


Type 850
Hinged-Pairs

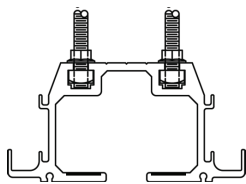


Type 850
Multi-Directional

Steel Track Systems

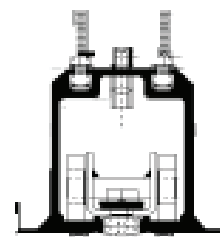


Type 11L
Hinged-Pairs



Type 850 HD
Steel Tread Surface
Individual Panels,
Curve & Diverter

Electric Track Systems



Type 850 E
Continuously-Hinged Electric

WARRANTY: Our confidence in the engineered load-bearing capacity, durability, operational ease and aesthetics that are built into all of our track systems, allows us to offer the best track & carrier warranty in the industry: **10 years on every manually operated track and carrier system we manufacture!**



More Information