



Luminous™ – Movable Glass Walls by Kwik-Wall

Technical Data

STELLA • LUNA • **ILLONA** • AVA • MATA

ILLONA™ – Single or Telescopic Sliding Glass Door Partitions

SECTION 10 22 43 SLIDING PARTITIONS

Overview

Panel Type

- ☒ Individual
☐ Hinged-Paired
☐ Continuously-Hinged

Partition Support

- ☒ Top Support
☐ Floor Support

Stacking Configurations

- ☒ Centerline
☐ Offset
☐ Remote
☒ Bi-Parting

Frame Thickness

- | | | |
|--|-------|--------|
| <input type="checkbox"/> 4-11/16" | [119] | 50 STC |
| <input type="checkbox"/> 4-1/2" | [115] | 44 STC |
| <input type="checkbox"/> 2-13/16" | [71] | |
| <input type="checkbox"/> 1-3/4" | [44] | |
| <input checked="" type="checkbox"/> 1-3/8" | [35] | |
| <input type="checkbox"/> Frameless | | |

Operation – Panels

- ☐ Fully-Automatic
☒ Manual

Operation – Seals

- ☐ Automatic
☐ Manual
☒ Fixed

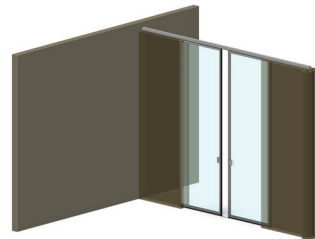
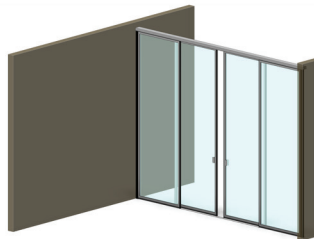
Sound Control

- ☐ 50 STC
☐ 44 STC
☐ 43 STC
☐ 35 STC
☒ 33 STC
☐ Non-Acoustic

Power Requirement

- ☐ Yes – Fully Automatic
☐ Yes – Auto-Seals only
☒ No – Manual

Luminous Illona offers the industry's trimmest framed operable glass wall at just 1-3/8" thick. Delivering thin-line aesthetic with functional 33 STC sound control, **Illona slider doors or telescoping panels** enable side by side parallel stacking footprint on single or multi-track centerline layouts.



WEIGHTS:
 5.12 lbs. / sq. ft.
 [25.0 kg / m2]



More Information



Luminous™ – Movable Glass Walls by Kwik-Wall

Technical Data

ILLONA™ – Single or Telescopic Sliding Glass Door Partitions

SECTION 10 22 36 – FOLDING PANEL PARTITIONS – GLASS

SECTION 10 22 39 – Sliding Glass Partitions

PART 1 – GENERAL

1.01 DESCRIPTION

A. General

1. Furnish and install single or multi-panel telescopic glass partitions and suspension system for interior use only that provide an acoustic separation between rooms when extended. Provide all labor, materials, tools, equipment, and services for sliding folding glass partitions in accordance with provisions of contract documents.

1.02 RELATED WORK BY OTHERS

- A. Preparation of opening will be by General Contractor. Any deviation of site conditions contrary to approved shop drawings must be called to the attention of the architect.
- B. All header, blocking, support structures, jambs, and track enclosures, as required in 1.04 Quality Assurance.
- C. Pre-punching of support structure in accordance with approved shop drawings.
- D. Paint or otherwise finishing all trim and other materials adjoining head and jamb of the partitions.

1.03 SUBMITTALS

- A. Complete shop drawings are to be provided prior to fabrication indicating construction and installation details. Shop drawings must be submitted within 60 days after receipt of signed contract. Show performance test results and details of construction materials, colors, profiles, and opening dimensions. Appropriate LEED 2009 (v3) credit for the following:
IEQ Credit 8.1: Daylight & Views – Daylight 75% of Spaces
IEQ Credit 8.2: Daylight & Views – Daylight 90% of Spaces

1.04 QUALITY ASSURANCE

- A. Preparation of the opening shall conform to the criteria set forth per ASTM E557 Standard Practice for Architectural Application and Installation of Operable Partitions.
- B. Glass shall be safety glass per ISO 28278-1:2011 or ASTM C1048-18 equivalent standard
- C. Partition shall be tested to the ISO 10140-2 or ASTM E90 equivalent standard
- D. Product to meet ANSI/ASA Standard S12.60, Acoustical Performance Criteria, Design Requirement and Guidelines for Schools.

1.05 PRODUCT DELIVERY, STORAGE, AND HANDLING

- A. Proper storage of partitions before installation and continued protection during and after installation will be the responsibility of the General Contractor.

1.06 MANUFACTURER WARRANTY

- A. Provide folding glass partitions system's standard limited warranty guaranteed against defects in material and workmanship for a period of five (5) years for panels and 10 years for tracks. Warranty does not cover glass damage after delivery, abuse or misuse, and must be installed by a factory trained, approved installer.

PART 2 – PRODUCTS

2.01 ACCEPTABLE MANUFACTURERS

- A. Upon compliance with all the criteria specified in this section, Manufacturers wishing to bid products similar to the product specified must submit to the architect 10 days prior to bidding complete data in support of compliance and a list of three past installations of products similar to those listed. The submitting manufacturer guarantees the proposed substituted product complies with the product specified and as detailed on the drawings.

2.02 MATERIALS

- A. Product to be top supported, single or multi-panel telescopic, acoustically rated glass panels, with Basis-of-Design the ILLONA™ series by Kwik-Wall.
- B. Panel Construction
 1. Panels shall be nominally 1 3/8" [35] thick and up to 39 3/8" [1000] in width.
 2. Frames shall be of architectural grade aluminum with powder coated finishes and gasketed vertical edges that form a tight panel-to-panel connection. Standard panel heights up to 9'-10" [3000] with full glass fronts.
 3. Glazing sealants and gaskets suited and shaped for the glass configuration and thickness.
 4. Horizontal seals will have top and bottom brush seals on both edges of the panel frame to form tight acoustic connections with track and floors.
 5. Multi-panel models to interlock with each other and telescope out to fill the opening.
 6. Lead closing mechanism to provide a "soft close" feature for smooth operation.
 7. Glass: The glass shall be factory installed low iron, clear tempered, nominal 5/16" [8]. Either laminated or tempered safety glass can be supplied to meet the safety and acoustical performance requirements in Section 1.04. Glass can be customized with decals and etching (requires factory pre-approval).
 8. Weight of Panels: 5.12 lbs./sq. ft. [25.0 kg/m²]



Luminous™ – Movable Glass Walls by Kwik-Wall

Technical Data

ILLONA™ – Single or Telescopic Sliding Glass Door Partitions

SECTION 10 22 36 – FOLDING PANEL PARTITIONS – GLASS

SECTION 10 22 39 – Sliding Glass Partitions

C. Suspension system

1. Track shall be black powder coated architectural grade extruded aluminum alloy 6063-T6. Track design shall provide integral support for adjoining ceiling, soffit, or plenum sound barrier. Built-in ceiling trim shall match finish, providing enclosure of plenum sound barrier on both sides of the track for maximum sound control. Top track to be connected to the structural support either directly or by pairs of threaded steel hanger rods. A section of top track will be removable in order to make it possible for a panel to be removed from the track for later maintenance. Floor guide track required for multi-panel configurations shall be recessed or surface mounted and must be ramped, not exceed 3/8" [9] in thickness.
2. Every panel shall be supported by two 2-wheeled carrier.
3. Plenum closure (by others): Design of plenum closure must permit lifting out of header panels to adjust track height. Plenum closure required for optimum sound control of partition per ASTM E-557.

D. Finishes

1. Panel frames shall be black powder coated aluminum.
 - a. Optional (upcharge):
 - i. Customer selected custom RAL color (requires factory pre-approval and may extend lead time)
2. Fixed, continuous gasketing and sound seals gaskets shall be black.

E. Available Accessories/Options

1. Low profile handle from manufacturer's standard selection.
2. Surface mounted muntins on single side.
3. Double full-height pass doors in bi-parting configuration

- B. Standard panel construction shall have obtained either an ISO dB or ASTM STC rating of 33 dB/STC.

PART 3 – EXECUTION

3.01 EXECUTION

- A. Installation. The complete installation of the operable wall system shall be by an authorized factory-trained installer and be in strict accordance with the approved shop drawings and manufacturer's standard printed specifications, instructions, and recommendations.
- B. Cleaning
 1. All track and panel surfaces shall be wiped clean and free of handprints, grease, and soil.
 2. Cartoning and other installation debris shall be removed to onsite waste collection area, provided by others.
- C. Training
 1. Installer shall demonstrate proper operation and maintenance procedures to owner's representative.
 2. Owner's manuals shall be provided to owner's representative.

2.03 OPERATION

- A. Pull the door across the opening and allow the soft close mechanism to finish door latching and lock into place via built-in floor pins located inside the bottom panel rail.
- B. Stack/Store Panels
 1. Retract floor pins and push to storage area.

2.04 ACOUSTICAL PERFORMANCE

- A. Supply a copy of the acoustical test report certifying that the partition was tested by an independent laboratory. The partition tested must be fully functional and meet ISO or ASTM standards. The test results must be similar to or exceed the performance specified. Any sound test not showing panel construction details and weight or not disclosing all of the information will not be valid. Manufacturers must also guarantee that the products proposed have the same characteristics as the products specified and are in accordance with the drawings.



Luminous™ – Movable Glass Walls by Kwik-Wall

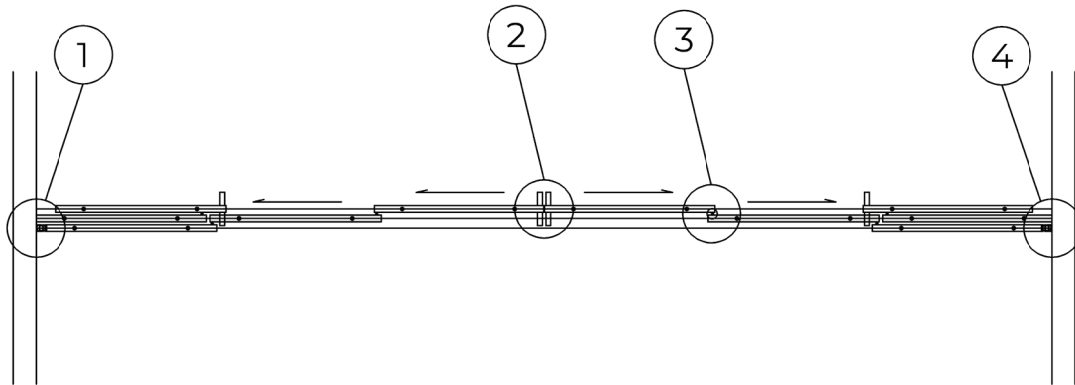
Technical Data

ILLONA™ – Single or Telescopic Sliding Glass Door Partitions

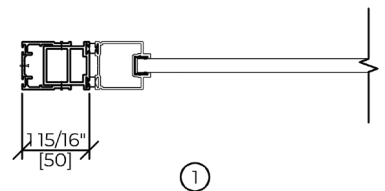
SECTION 10 22 36 – FOLDING PANEL PARTITIONS – GLASS

SECTION 10 22 39 – Sliding Glass Partitions

STACKING CONFIGURATIONS

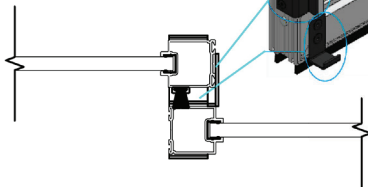


HORIZONTAL DETAILS



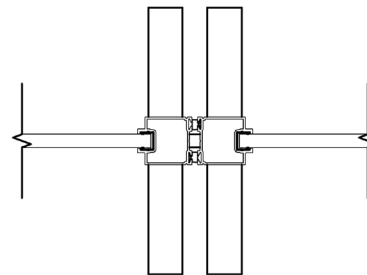
①

GUIDE DETAIL

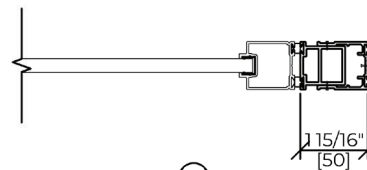


③

ORIENTATION BASED ON
WHERE BRUSH SEALS ARE
LOCATED ON LAYOUT



②



④

Stack Depth Allowance: : 2" per panel (50.8)

Pocket Width:

Widest Panel + 3.5" each side of panel stack



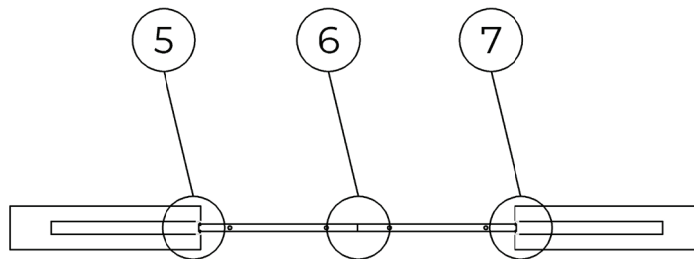
Luminous™ – Movable Glass Walls by Kwik-Wall Technical Data

ILLONA™ – Single or Telescopic Sliding Glass Door Partitions

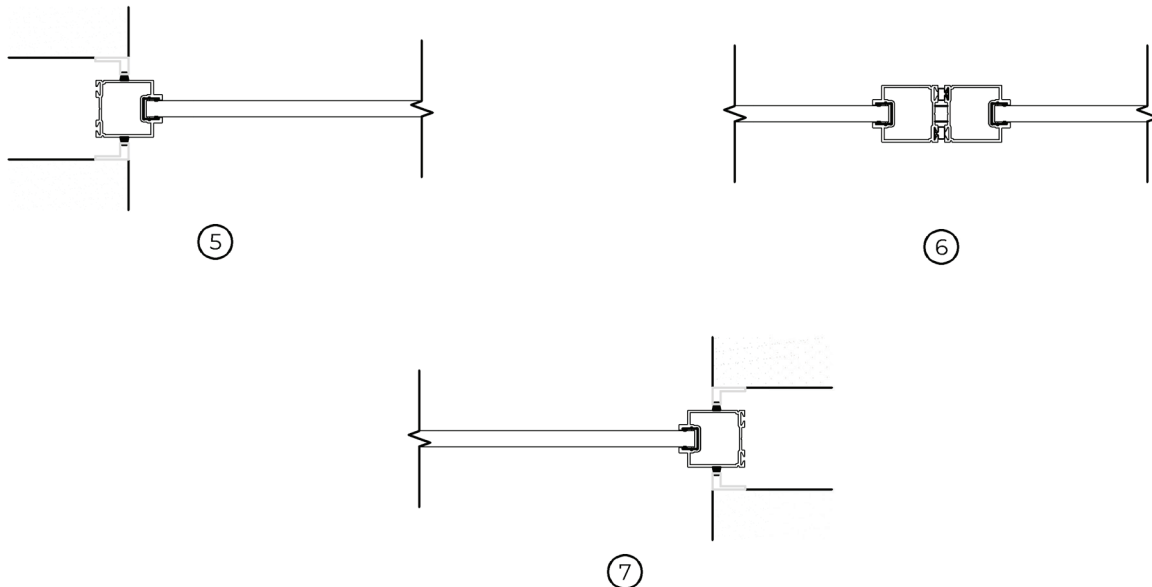
SECTION 10 22 36 – FOLDING PANEL PARTITIONS – GLASS

SECTION 10 22 39 – Sliding Glass Partitions

STACKING CONFIGURATIONS



HORIZONTAL DETAILS





Luminous™ – Movable Glass Walls by Kwik-Wall

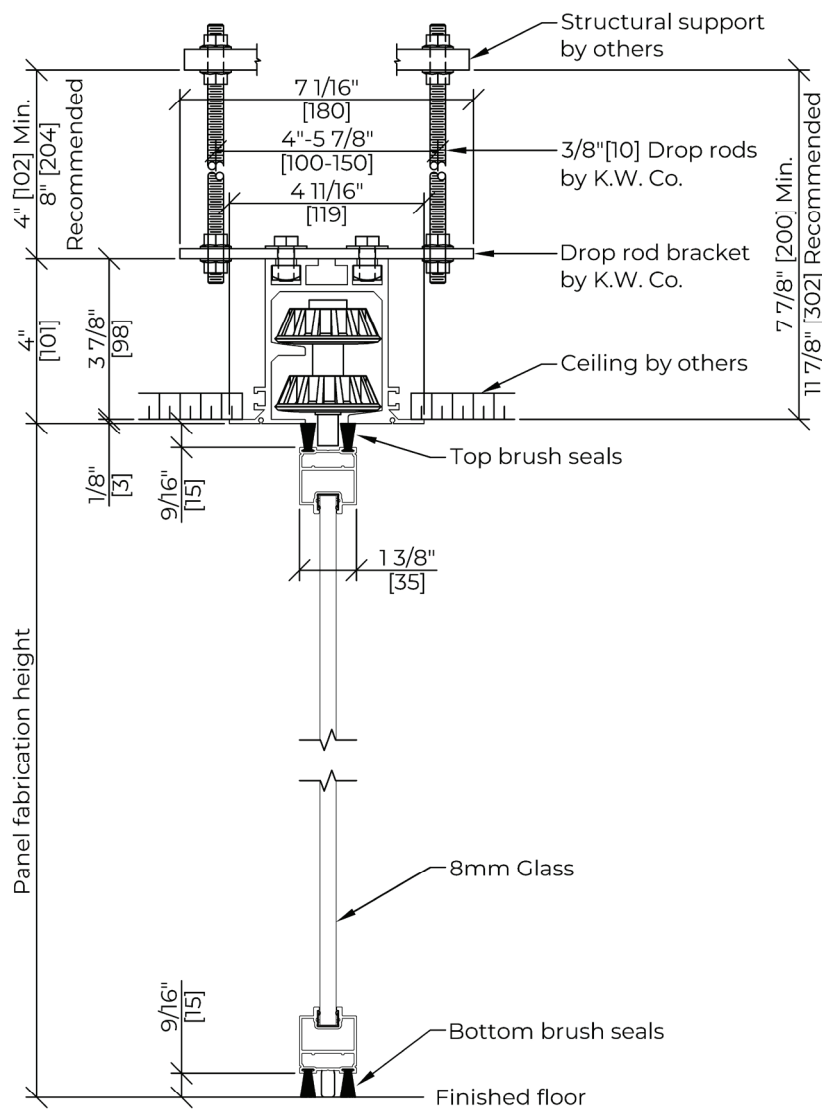
Technical Data

ILLONA™ – Single or Telescopic Sliding Glass Door Partitions

SECTION 10 22 36 – FOLDING PANEL PARTITIONS – GLASS

SECTION 10 22 39 – Sliding Glass Partitions

VERTICAL SECTIONS





Luminous™ – Movable Glass Walls by Kwik-Wall

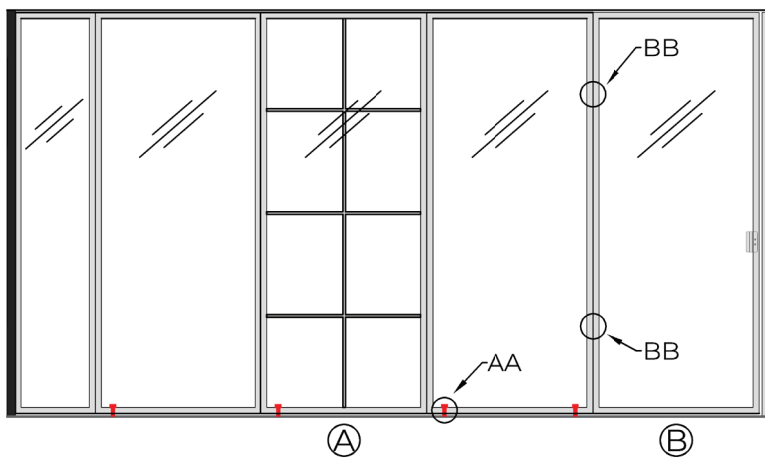
Technical Data

ILLONA™ – Single or Telescopic Sliding Glass Door Partitions

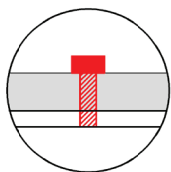
SECTION 10 22 36 – FOLDING PANEL PARTITIONS – GLASS

SECTION 10 22 39 – Sliding Glass Partitions

ELEVATION DETAILS

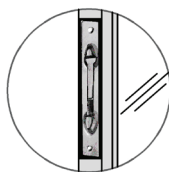


DETAIL AA



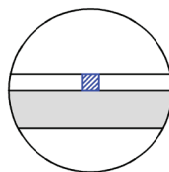
FLOOR PIN
LOCATION BASED ON
CONFIGURATION

DETAIL BB

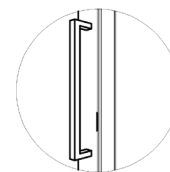


LOCK ON TOP AND BOTTOM
TO KEEP DOOR BALANCED

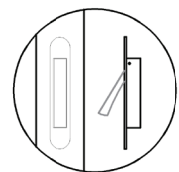
DETAIL CC



TOP PIN FOR PIVOTING
CONFIGURATION



HANDLE FOR
SLIDING AND TELESCOPIC
CONFIGURATION



RECESSED DOOR PULL FOR
SLIDING AND TELESCOPIC
CONFIGURATION

- Ⓐ HORIZONTAL AND VERTICAL MUNTINS
- Ⓑ FULL-HEIGHT DOOR, HINGED TO ADJACENT PANEL
- Ⓒ FULL-HEIGHT DOOR, HINGED TO WALL JAMB