



Luminous™ – Movable Glass Walls by Kwik-Wall

Technical Data

STELLA • LUNA • ILLONA • AVA • **MATA**

MATA™ – Individual, Multi-Directional Panels

SECTION 10 22 39 FOLDING PANEL PARTITIONS
SECTION 10 22 39.13 FOLDING GLASS-PANEL PARTITIONS

Overview

Panel Type

- ☒ Individual
☐ Hinged-Paired
☐ Continuously-Hinged

Partition Support

- ☒ Top Support
☐ Floor Support

Stacking Configurations

- ☐ Centerline
☒ Offset
☒ Remote
☒ Bi-Parting

Frame Thickness

- ☐ 4-11/16" [119] 50 STC
☐ 4-9/16" [116] 44 STC
☐ 2-13/16" [71]
☒ 1-3/4" [44]
☐ 1-3/8" [35]
☐ Frameless

Operation – Panels

- ☐ Fully-Automatic
☒ Manual

Operation – Seals

- ☐ Automatic
☐ Manual
☒ Fixed

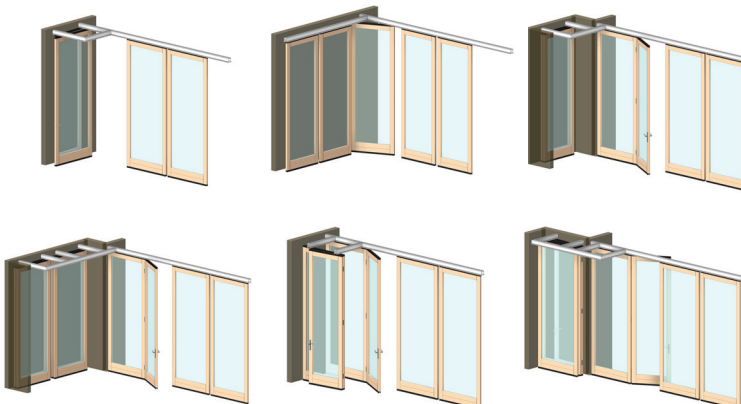
Sound Control

- ☐ 50 STC
☐ 44 STC
☐ 43 STC
☐ 35 STC
☐ 33 STC
☒ Non-Acoustic

Power Requirement

- ☐ Yes – Fully-Automatic
☐ Yes – Auto-Seals only
☒ No – Manual

Luminous MATA from Kwik-Wall - where the organic beauty of timber meets the visual clarity and performance of glass to provide the industry's most elegant, non-acoustic glass wall design option. Top-supported individual, multi-directional panels, glide quietly across your opening, and store compactly in multiple stacking configurations. Triple-laminated panel frame options are available in stain-finished Red Oak and Maple, or in white or black painted Poplar. Mata's sleek 1-3/4" frame offers a compact storage footprint, with designer hardware and multiple glazing options including decorative glass, provide the quality finishing touches to the stylish simplicity and classic timber charm.



WEIGHTS:
7.0–7.5 lbs. / sq. ft.



MATA

More Information



Luminous™ – Movable Glass Walls by Kwik-Wall

Technical Data

MATA™ – Individual, Multi-Directional Frameless Panels

SECTION 10 22 39 – Folding Glass Partitions

PART 1 - GENERAL

1.01 DESCRIPTION

A. General

1. Furnish and install operable glass partitions and suspension system. Provide all labor, materials, tools, equipment, and services for glass operable walls in accordance with provisions of contract documents.

1.02 RELATED WORK BY OTHERS

- A. Preparation of opening will be by General Contractor. Any deviation of site conditions contrary to approved shop drawings must be called to the attention of the architect.
- B. All header, blocking, support structures, jambs, and track enclosures, as required in 1.04 Quality Assurance.
- C. Pre-drilling of support structure in accordance with approved shop drawings.
- D. Paint or otherwise finishing all trim and other materials adjoining head and jamb of the partitions.

1.03 SUBMITTALS

- A. Complete shop drawings are to be provided prior to fabrication indicating construction and installation details.

1

1.04 QUALITY ASSURANCE

- A. Preparation of the opening shall conform to the criteria set forth per ASTM E557 Standard Practice for Architectural Application and Installation of Operable Partitions.
- B. Glass shall be clear tempered recent ASTM C1048 standards.

1.05 PRODUCT DELIVERY, STORAGE, AND HANDLING

- A. Proper storage of partitions before installation and continued protection during and after installation will be the responsibility of the General Contractor. IMPORTANT: Room in which panels are stored and/or installed must be temperature and moisture controlled.

1.06 WARRANTY

Track, carriers, and panel frames shall be guaranteed for one year against defects in material and workmanship. Glass breakage is not included in this warranty unless done during manufacturing or installation processes.

PART 2 - PRODUCTS

- A. Upon compliance with all of the criteria specified in this section, Manufacturers wishing to bid products similar to the product specified must submit to the architect 10 days prior to bidding complete data in support of compliance. The submitting manufacturer guarantees the proposed substituted product complies with the product specified and as detailed on the drawings.

2.02 MATERIALS

- A. Product to be top supported, individual, wood-framed movable glass wall MATA™ by Kwik-Wall®
 1. Panels shall be nominally 1-3/4" [44mm] thick and 24" [610] to 48" [1219] in width. Maximum standard heights to 10'2" [3099]. Custom heights available but must be approved by manufacturer.
 2. Wood frame of triple laminated solid wood top and bottom rails and stiles that are constructed from custom veneers with an engineered wood core.
 - a. Basis of design is Red Oak, Maple or Poplar (select one).
 - b. Optional species:
 - i. Cherry, Birch, Pine, Walnut and Douglas Fir are available
 - ii. Customer selected species (requires factory approval for manufacturing compatibility)
 3. Vertical lead rails shall contain full height partially recessed rubber bulb seal
 4. Horizontal top & bottom rails shall incorporate continuous contact seals of brown multi-ply vinyl.
 5. Each panel contains a mortise floor pin which extends into a floor mounted dust covered receptacle to stabilize and secure each panel in the opening.
 6. Glass inserts shall be a choice of
 - a. 1/4" [6mm] clear tempered glass (standard)
 - b. 5/16 [8mm] translucent laminated glass (factory approval required)
 - c. Custom glass (factory approval required)
 7. Glass shall be glazed using matching solid wood stops one side of panel.
- B. Weight of the panels shall be approximately:
1/4" [6] tempered glass: 7.0 lbs. per sq. ft.
5/16" [8] laminated glass: 7.5 lbs. per sq. ft.
- C. Suspension system:
 1. Manufacturer supplied -Track shall be Type 425 clear anodized architectural grade extruded aluminum alloy 6063-T6. Track design shall provide integral support for adjoining ceiling, soffit, or plenum sound barrier. Track shall be connected to the structural support by pairs of threaded steel hanger rods.
 - a. Each panel shall be supported by two 2-wheeled counter-rotating horizontal carriers. Wheels to be of precision ground steel ball bearings encased with molded polymer tires.



Luminous™ – Movable Glass Walls by Kwik-Wall

Technical Data

MATA™ – Individual, Multi-Directional Frameless Panels

SECTION 10 22 39 – Folding Glass Partitions

D. Finishes

1. Aluminum track shall be clear anodized
 - a. Optional upgrade:
 - i. custom anodized
 - ii. custom powder coated
2. Wood frame shall be furnished stained and finished with a matte polyurethane.

- a. Select stain color from manufacturer's standard stain selection:
 - (a) Fruitwood
 - (b) Dark Oak
 - (c) Wheat
 - (d) Cordovan
- b. Premium stains available at an upcharge to be selected from the Sherwin Williams® Sher-Wood BAC wiping stains Color Selector.

[Specifiers Note: Due to variation of wood grains and moisture content, Kwik-Wall will attempt to closely match custom stains, however, exact stain matching cannot be guaranteed.]

- c. Panels may be ordered unfinished for field finishing.

[Specifier's Note: Although care is taken to ensure products do not warp or twist, unfinished panels may experience wood warpage due to humidity and heat variations. Customer assumes responsibility for proper finishing and no warranty will be provided.]

- d. Painted solid color: White or Black
- e. Custom Color Painted (requires approval of color on veneer sample prior to final finishing and comes at an upcharge.)

[Specifiers Note: All painted systems are fabricated with Poplar woods species as the base.]

3. Hardware finish to be (select one)
 - a. Polished Brass (standard) (a/k/a Resista)
 - b. Antique Brass (standard)
 - c. Satin Nickel (standard)
 - d. Optional Upgrade (may extend lead times)
 - i. Polished Chrome
 - ii. Matte Black
 - iii. Oil Rubbed Bronze (a/k/a Rustic Umber)

E. Available Accessories/Options

1. Inset pass door of the same thickness and construction as the basic panels, one-way swing.

- a. Hoppe Munchen style handle
 - i. Optional upgrade: Lock to be keyed for Schlage brand

2. Hinged closure panel of the same thickness and construction as the basic panels, one-way swing (select as required):

- a. Hoppe Munchen style handle
 - i. Optional upgrade: Lock to be keyed for Schlage brand

3. Floor Locks

- a. Adams Rite thumb turn floor lock
- b. Adams Rite keyed floor lock

4. Customer supplied glass accepted and must not exceed 5/16" thickness. Optional glass etching and decals available

2.03 OPERATION

- A. Panels shall be manually moved from the storage area, positioned in the opening, and either edge activated or face activated floor bolt set.
- B. Final partition closure to be by (select one):
 1. Hinged Closure with handle
 2. Overlapping the opening
 3. 2" [51] trail gap
 4. Seal to face of Type I or Type IV storage pocket doors
- C. Stack/Store Panels
 1. Retract floorbolt and move to storage area. Panels are stored on stacks in storage area(s).

PART 3 - EXECUTION

- A. Installation. The complete installation of the glass wall system shall be by an authorized installer and be in strict accordance with the approved shop drawings and manufacturer's standard printed specifications, instructions, and recommendations.
- B. Cleaning
 1. All track and panel surfaces shall be wiped clean and free of handprints, grease, and soil per specific instructions.
 2. Optional specialty glass requires special cleaning per instructions provided.
 3. Cartoning and other installation debris shall be removed to on-site waste collection area, provided by others.
- C. Training
 1. Installer shall demonstrate proper operation and maintenance procedures to owner's representative.
 2. Owner's manuals shall be provided to owner's representative.



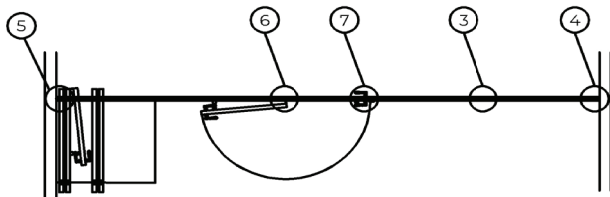
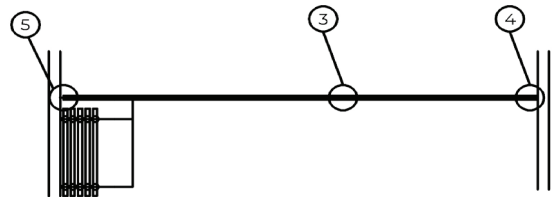
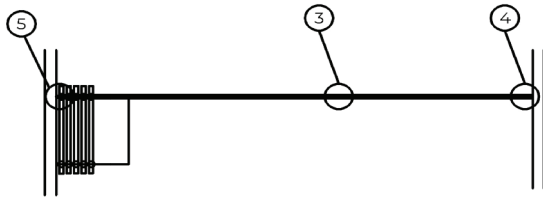
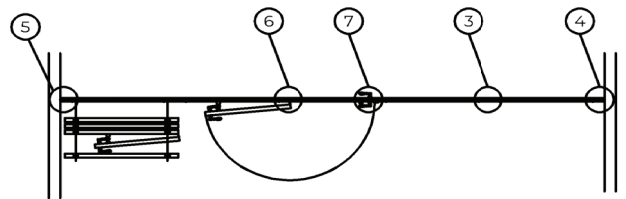
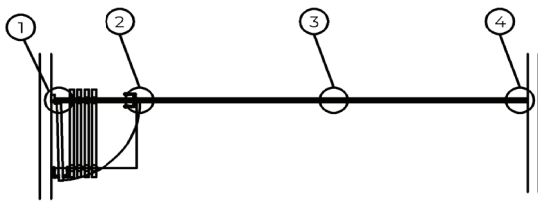
Luminous™ – Movable Glass Walls by Kwik-Wall

Technical Data

MATA™ – Individual, Multi-Directional Frameless Panels

SECTION 10 22 39 – Folding Glass Partitions

STACKING CONFIGURATIONS



Stack Depth Allowance: 3" [76] per panel

Pocket Width: Widest Panel + 3" ea. side



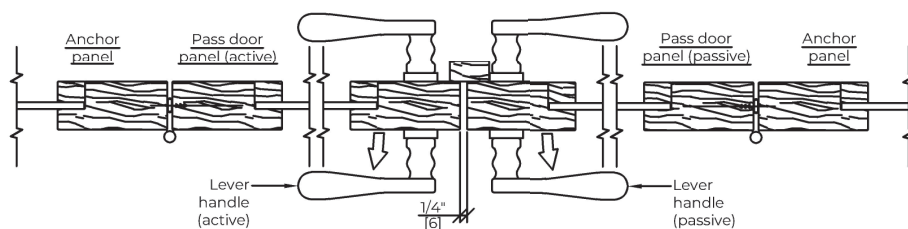
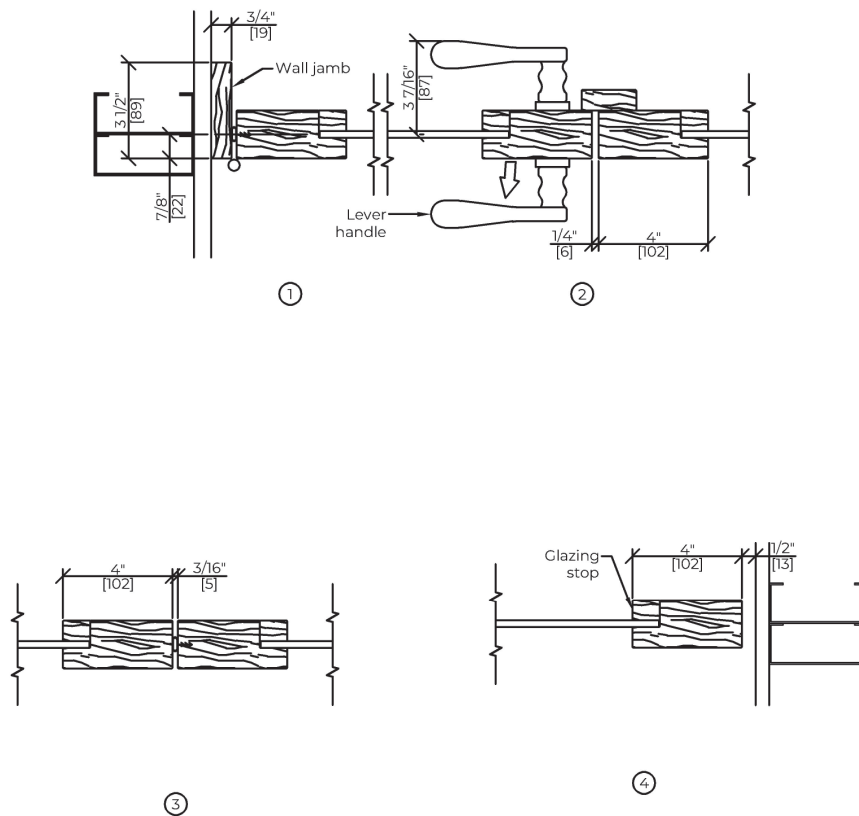
Luminous™ – Movable Glass Walls by Kwik-Wall

Technical Data

MATA™ – Individual, Multi-Directional Frameless Panels

SECTION 10 22 39 – Folding Glass Partitions

HORIZONTAL DETAILS



Optional double door configuration detail



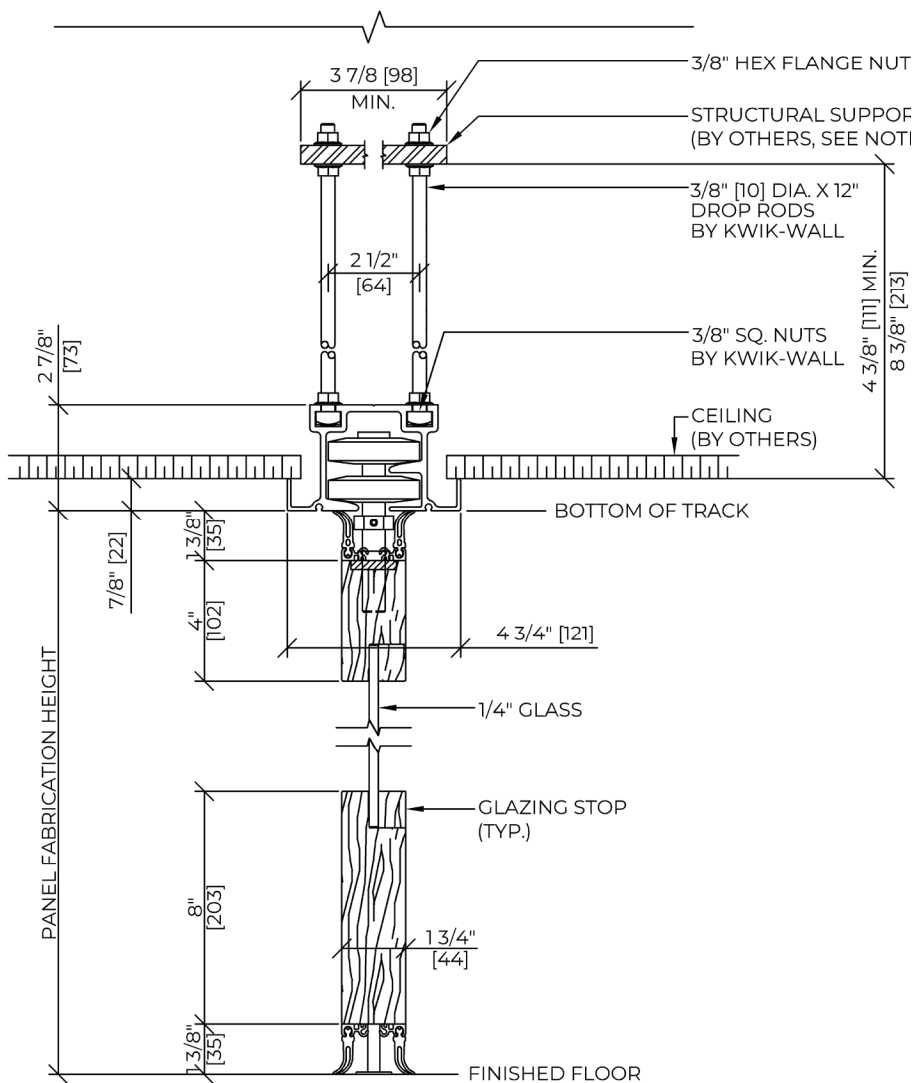
Luminous™ – Movable Glass Walls by Kwik-Wall

Technical Data

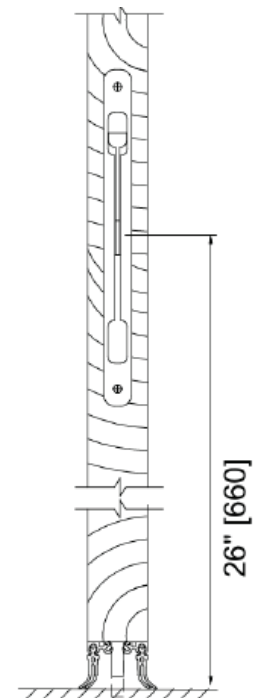
MATA™ – Individual, Multi-Directional Frameless Panels

SECTION 10 22 39 – Folding Glass Partitions

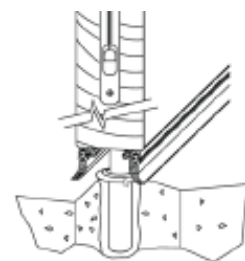
VERTICAL SECTIONS



Face-Activated Floorbolt engages in floor receptacle to ensure panel to panel alignment & stability



Edge-Activated Mortise Footbolt Pin



Footbolt receptacle – stainless steel, dust-proof strike/floor pin



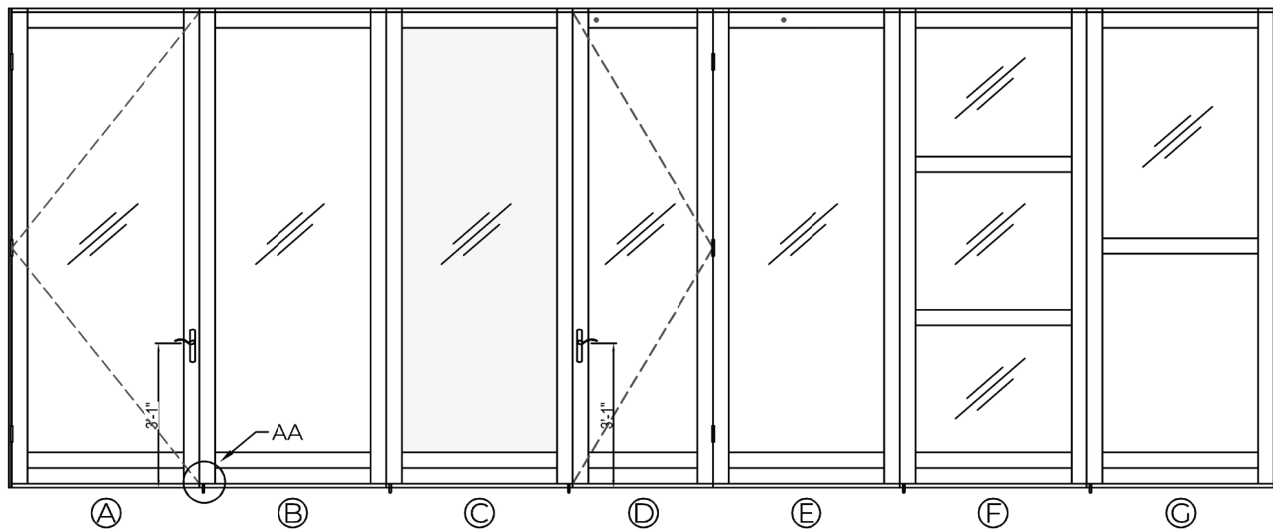
Luminous™ – Movable Glass Walls by Kwik-Wall

Technical Data

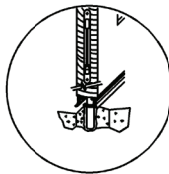
MATA™ – Individual, Multi-Directional Frameless Panels

SECTION 10 22 39 – Folding Glass Partitions

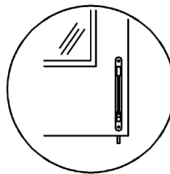
ELEVATION DETAILS



DETAIL AA



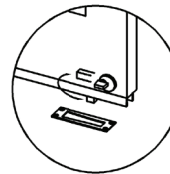
EDGE ACTIVATED
THROW BOLT WITH
STAINLESS STEEL
DUST-PROOF STRIKE
PLATE AND FLOOR PIN



OPTIONAL FACE
ACTIVATED THROW
BOLT AND FLOOR PIN



OPTIONAL
DEADBOLT WITH
KEY LOCK



OPTIONAL
DEADBOLT WITH
THUMB TURN

- (A) HINGE CLOSURE PANEL
- (B) BASIC PANEL
- (C) FULL SATINY TRANSLUCENT (FROSTED) GLASS
- (D) HINGED PASS DOOR
- (E) ANCHOR PANEL
- (F) MUNTINS
- (G) PARTIAL (OR FULL HEIGHT) WOOD INSERTS